



A. Capell 29. 12. 721.

238.7 PAN

MOORE COLLEGE  
LIBRARY

MOORE THEOLOGICAL COLLEGE LIBRARY



3 2042 10014523 8

**TAPARORO ANA BUKI BAPUNA.**

---

**TAPARORO ANA WONA.**

---

**PANA PANAEATI.**

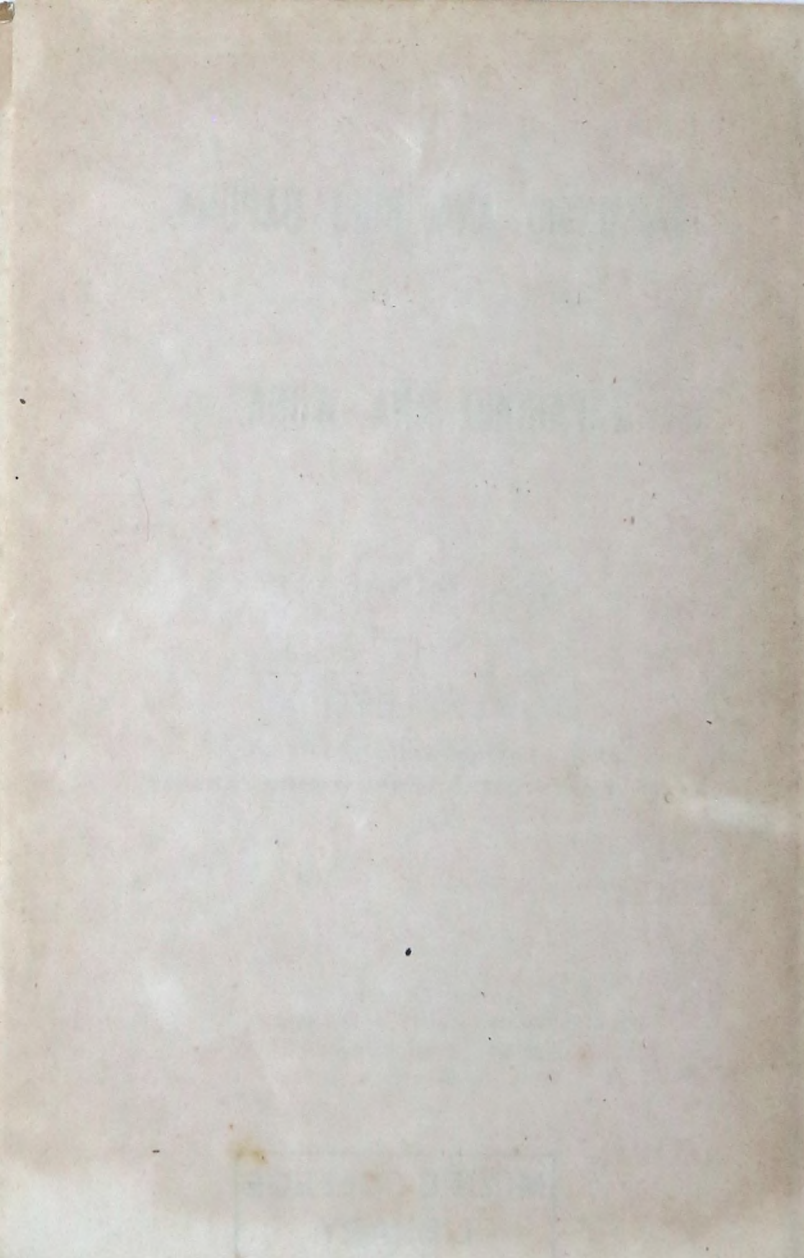
---

FIRST CATECHISM AND HYMNS,  
TRANSLATED INTO THE LANGUAGE OF PANAEATI,  
PAPUA.

---

PRINTED BY  
HUNKIN, ELLIS & KING,  
111-113 PIRIE STREET,  
ADELAIDE.  
1918.

**MOORE COLLEGE  
LIBRARY**





# TAPARORO ANA BUKI BAPUNA

---

AWARIHINA 1.

---

IEHOVA BANA.

---

1—*Hcnara abwe i ginorina?*

Iehova.

2—*Hent<sup>al</sup>era Ichova?*

Tamara raburabuma Iehova.

3—*Hauna Ichova?*

Iehova i laiarua, maisena ia nigeia i teripuna e nigeia ni moasi.

4—*Ichova ga?*

Iehova wana abamina hi gewi.

5—*Hauna Ichova i atena i ginol?*

Ebo Iehova nuana bugal gegewena i ginol wana siba i gan.

6—*Ichova bugul gegewena tab i atena?*

Ibwe, bugul gegewena Iehova i atena; gamagal wari nopitone gegewena ge, wari baba ge, ari hehegan gegewena ge.

7—*Wara nopitone ea ara hehegan ge, Ia abwe ni atarara?*

Ibwe, ara hehegan gegewena ge e wara bugul misusumena gegewena ge, waiwaisana ge, nanakina ge, abwe ni atarara ran momoasena.

8—*Ichoza tab i nunuana agizwa?*

Ibwe, bugul gegewena Iehova abwe i ginolil i nunuana agil.

9—*Hauna Iehova abwe i ginol?*

Iehova bugul gegewena raburabuma ge panua ge abwe i ginol; a mura gamagal abwe i ginol.

## AWARIHINA II.

### GAMAGAL GINORINA BANA.

1—*Ichoza gamagal ga i ginol?*

Iehova panua bibirena i aheginal gamagal tuana.

2—*Biribiri iaiaruana tab i ahe?*

Nigeia; Iehova iana iawarina abwe i iawal bwehibwehi buhuna;, inoke gamagal i iawal.

3—*Hauna kaizena Iehova gamagal abwe i ginol?*

Iehova abwe gamagal i ginol iaka i atena Ia ge i nunuana ge, i henapo an ge, e i iariaia nigeia ni moasi.

4—*Iehova ga i teli tau ge iowa ge hohowena?*

Iehova tau ge iowa ge hohowena abwe i teli eowa Idena.

5—*Henara kanukanununa gamagal abwe i ginol i ora?*

Gamagal abwe i ginol Iehova kanukanuna i ora.

6—*Hauna gamagal abwe i ginol i ora Iehova?*

Iaiaruana abwe i ginol i ora Iehova, bwabwarena ge i waisi ge, iawarina nigeia ni moasi.

---

### AWARIHINA III.

---

### GAMAGAL WARI LONEGANEGA BANA.

---

1—*Tuburau hohowena tab hi miora bwabwarena ge waiwaisana ge?*

Nigeia; abwe i loneganega an Iehova erana, e hi kahikahin.

2—*Loneganega hauna i ora?*

Loneganega iora ia Iehova wana bapatanek nigeia ta henapoan.

3—*Hauna Iehova i bapatanek tuburau eral hohowena eowa Idena?*

Iehova i bapatanek eral i ora; ai enona, i papatena waiwaisana ge nanakina ge, bahi ku an.



4—*Bapatanek ia tab hi henapoan?*

Nigeia; ai enona iaka i anan.

5—*Wari loneganega tab i apapanak tora agil?*

Ibwe; wari loneganega abwe i apapanak gamagal gegewel agil.

6—*Hauna lahena i rahel?*

Iehova iaka i towa agil, e eowa i pitagalil e hi onauan ge hi ariga ge i rohu agil.

7—*Hauna i ora i apapanak agil?*

I ginol heria i masal hi ora neganega, iaki i onauan ge i ariga ge.

8—*Hauna iora ta masal ta ora neganega?*

Kira ta gewi gewi to masal nuara i nak e, bini-mara Iehova nigeia i nunuana agira, nuara i apanak nigeia i abubun.

9—*Iehova tab i nunuana kiragewi agira?*

Ibwe, tuburau hohowena abwe hi loneganega inoke Iehova i pana nunuana i bateli Iesu wara to lopipomal abwe ni guiauan.

---

#### AWARIHINA IV.

---

#### GAMAGAL WARI TOPOMAL BANA.

---

1—*Ta loneganega, hauna i ora i pamalila?*

Iesu Keriso Iehova Natuna, totona i rake i pama-lila.



2—*Hauna Iesu Keriso Babara iaka i ginol i pamalila?*

Ia iaka i masal i ora gamagal i iaomal i mirahera, e tomati ek i rut, e i na enatia raburabuma.

3—*Hauna wara topamal i ora?*

Iesu Keriso ginorina kaiwena Iehova nigeia i rahera e i ginorila bwabwarera, e abwe ni ahera raburabuma.

4—*Gamagal gegezweni Ia tab i pamalila?*

Binimara ta nuaren e ta aburirek Iesu Keriso erana ni pamalila.

5—*Hauna ta ora ta nuaren?*

Ta nuaren ta ora wara loneganega nuanakina ta nuanak, ta lopapit e ta tataruaii, e ta ba Iehova bahi i rahera.

6—*Ga ta ora ta aburirek Iesu Keriso erana?*

Ta aburirek Iesu Keriso erana i ora wana baba ta ahe ia e ta aburirek erana Ia totona i pamalila.

7—*Eia owa totom u atena u ginol?*

Nau totou nigeia ea atena ea nuaren ge ea aburirek, e Iehova i pem Iaiarua Bwabwarena i rabeau, binimara ea baek erana.

8—*Binimara to loneganega wari loneganega nigeia hi tataruaii e negeia i aburirek Iesu erana, hauna wari lahena?*

Iehova i uruvi agil.

9—*Iehova negeia to loneganega i ahel, ga i ora?*

Nuaren ana sauga i pek to loneganega agil.

- 10—*Heria nigeia hi nuaren, hauna wari lahena?*  
Iaka hi iaomal mura Iehova abwe ni arioho ena  
negeia ni hi sikel.

---

AWARIHINA V.

---

ATARA MOMOASENA GE SAUGA MURA  
GE BARIA.

---

- 1—*Gamagal gegewena wari atara abwe ni gan?*  
Ibwe, kira gewi wara atara ni gan ran momoa-  
sena.
- 2—*Henara gamagal gegewena wari to atara?*  
Iesu Keriso Babara, Ia iaka i iaomal i mirahera,  
gamagal gegewena wari to atara abwe i ora.
- 3—*Atara ana ran ni gan mura hauna to loneganega  
wari lahena?*  
Heria abwe ni hi egun wari lahena nigeia ni  
moasi.
- 4—*To loneganega ga ni hi mina ni lahel?*  
Panua Setani arana Gehena.

- 5—*To henapo iaka hi iaomal hauna ni hi ora?*  
To henapo abwe ni hi egun iawariria nigeia ni moasi.
- 6—*To henapo iawariria ge ni hi ahe?*  
Hevân raburabuma.
- 7—*Hauna hevân i ora?*  
Hevan i ora panua i ianaiana ge i wasawasa ge.
- 8—*Hauna henapo iawariria amnana ia?*  
To henapo abwe ni hi mina Hevan wari iariaia tunahot nigeia ni momoasi.
- 9—*Ga i ora wari iariaia i tunahot?*  
Abwe ni hi minamina Babara eriana iaka ni hi iariaia tunahot.
- 10—*Tab nigeia ni hi retan ia?*  
To henapo nigeia ni hi retan Hevan raburabuma;  
heria nigeia ni hi iowaru, nigeia ni hi loman,  
nigeia ni hi loneganega.
- 11—*Heria tuaria ga hi ora?*  
Tuaria nigeia ni ariga al e abwe ni ora Iesu  
Keriso tuana waiwaisana hot.
- 12—*Hauna ni hi tuarari?*  
Iehova ni hi muroro ge ni hi henapoan ge.
- 13—*Hauna ni ora ni hi henapo Iehova erana raburabuma?*  
Nigeia ta tena, abwe ta egon raburabuma inoke  
ta atena.
- 14—*Ebo nuam nu nok panua ia i waisi nabinabi,  
annam ga i ora?*  
Ebo nau bwabwareu, ateu ge, iawariua ge, iaka  
abwe na egon hevân.



## AWARIHINA VI.

## TAPARORO BANA.

1—*Taparoro ga i ora?*

Taparoro i ora henapo bwabwarena i mina atera ge iawaria ge.

2—*Hauna i ora henapo bwabwarena i mina atera?*

Iaiarua Bwabwarena i ginorira bubun iaka wara longanega i moasi e ta nunuana Iehova erana.

3—*Hauna i ora henapo bwabwarena i mina iatearira?*

I ora ta henapo Iehova ge gamagal agil, i ora Iehova wana bapatanek bwabarena.

4—*Hauna eam tuarari u tuarari Iehova erana?*

No tuarari i ora Henapo Iehova erana, ea nunuana an, e wana bapatanek ea henapoan.

5—*Hauna eam tuarari u tuarari gamagal eral?*

No tuarari i ora, nam ge nain ge ea nunuana agil, e ea baba tunahot sauga gegewena, e ea nunuana gamagal gegewel agil.

6—*Ga u ginol ora ia?*

No tuarari ea tuarari Iehova ge gamagal eral ebo Iehova i rabeau.

7—*Hauna rabe ia?*

Iehova wana rabe i ora Iaiarua Bwabwarena wana gasisi ta ahe atera, iaka ta ginol bubun, binimara nigeia i rabera nigeia ta ginol.



8—*Ga ta ora Ichova wana rabe ta loia?*

Ichova wana rabe ta loia e ta taparoro gagasisi  
atera ge Ichova wana limi.

9—*Henara Iaiarua Bwabwarena wana rabe i pem  
eriara?*

Iesu Keriso wara Babara ge wara to pamal  
totona i pem.

---

## AWARIHINA VII.

---

### IESU KERISO GE WAWAIAU KEKESI BARIA.

1—*Iesu Keriso tab i nunuana, wawaiaiu agil?*

Ibwe: e varira i ba, wawaiaiu ku patanem eriau,  
e bahi ku lopwaril.

2—*Varira Iesu i, ora wawaiaia age?*

Ibwe: e Mataio ge Mareko wari wasana waiwai-  
sana Ia i wawaia bana ta ioliol.

3—*Iesu i lobwata bana ta atena?*

Luka i wasa i ora, Iesu wana bariman erutega  
erua iaka i gan, inoke i kite erana abanogogo  
Ierusalema.

4—*Hauna Ia i unan wawaiaiu erial?*

Ta ioliol wana siba i lobwata, e tamana ge hinana  
ge i nunuana agil.

5—*Tab Iesu Keriso wawaiaiu i muroro?*

Varira wawaiaiu hi pek eriana inoke i luluboil,  
nimana i pibosel, e i muroro agil.

6—*Iesu Babara tab i hago wawaiaiu agil?*

Varira wawaiaiu hi loi hosana limi taparoroa iaka  
Ia nuana i waisi.

7—*Tab i waisi wawaiaiu hi atena Buki wawasili  
bwabwarena?*

Ibwe: e Timoti wawaia i ora i atena Buki  
wawasili bwabwarena.

8—*Wawaiaiu baria hauna Iesu Babara i ba mura i na  
enatia raburabuma?*

Ia i baek Petero No sipi natunau u paanil.

9—*Wawaiaiu tab hi atena Iaiarua Bwabwarena hi  
ahe eriar?*

Ibwe: e Iehova i bateli iaka Iaiaruana i pek  
gamagal gegewel agil e wana muroro i pek  
wana gamagal natunau eral.

10—*Hauna murina i papatena Babara wawaiaiu wari  
Topamal i ora?*

Wawaiaiu i bapitaiso arana Tamara ge, Natuna  
ge, Iaiarua Bwabwarena.

11—*Hauna arana, Tamara ge Natuna ge Iaiarua  
Bwabwarena ge?*

Iehova maisena i ora eton, Ia i waisi nabinabi  
nigeia ni moasi.

12—*Hauna ku ora wami bapitaiso ku nuahikan?*

Iehova wana rabe ea awanun iaka ea taparoro  
tunahot, e Iehova no Topamal ea henapoan  
iawariu ana ran gegewena.

## AWARIHINA VIII.

KULULU GE, ABURIREK GE, BAPATANEK  
GE.1—*Iesu Babara wana awanun u beaunan na hago.*

Tamama owa ioho raburabuma. Aram iaka bwábwarena. Wam logugui u ba i gan. Wam bapatanek raburabuma hi henapoan, u ba panua i ora. Ran enona ama ebe u panima. Ama ha loneganega agiwa bahi u rahema, gamagal hi loneganega agima bahi ha rahel ha ora. Bahi u nulima wama rawakik, Satan i neganega owa u palowima. E wam logugui nabian ge, wam gasisi nabian ge, wam wasawasa nabian ge, nigeia ni hi momoasi ge. Amen.

2—*Wam aburirek bapuna nu ba.*

Nau ea aburirek Iehova Tamara gasigasisina nabian erana, Ia raburabuma ge panua iaka i ginol. E ea aburirek Natuna totona wara Babara Iesu Keriso erana; Ia Iaiarua Bwabwarena i pamasal, Meri kobasina i ab erana. Ponitio Pilato i loapanawe, e nihi korose erana, Ia iaka i ariga, e i mina ariaria; i na Helis; ran etonina tomate iaka i rut al; i na natia raburabuma, e i misio Iehova Tamara gasigasisina nabian awona; e raburabum iaka abwe ni nem gamagal moru ge tomate ge ni ataral. Ea aburirek Iaiarua Bwabwarena erana ge, taparoro bodana ge, to taparoro wari heliheliam ge, loneganega rahena i rake ge, tuara abwe ni hi rut al ge, e iawarina nigeia ni momoasi ge. Emen.



3—*Bapatanck crutega.*

- I. Nau Iehova wam Iehova. Bahi u ahe getoga etega.
- II. Iehova murina etega bahi u ginol, e Iehova kanukanuna i ora raburabum bugulina ge, panua bugulina ge, wewel bugulina panua gaburana ge bahi u ginol; e bahi u kululu an e bahi u henapo an; e Nau Iehova wam Iehova nuau i sapusapu, tamariau wari loneganega ea rahel wawaiiau erial, wari sauga etonina ge epatina ge hi towa agau; e tausan hi nunuana agau ge hi henapo agau ge ea nunuana agil.
- III. Iehova arana bahi u rumen panak; e ia i rumen panak arana Iehova abwe ni rabe erana.
- IV. Ran Sabata u teli bwabarena u nuahikan. Ran esiwa u tuarari, wam tuarari gegewena u tuarari; e ran awona wam Iehova wana Sabata; ran ia bahi u tuarari owa ge, natum melutau ge, natum meluiowa ge, wam to tuarari meluiowa ge, wam bulumakau ge, wam to tuarari meluiowa ge, wam bulumakau ge, wam to masal i minamina wam panua ge; e ran esiwa Iehova raburabum ge, panua ge, hoga ge, wari bugul gegewena ge iaka i ginol, e ran awon i veaho; iaka Iehova ran Sabata i muroro e i teli bwabwarena.
- V. Tamam ge Hinam ge u muroro agil: iaka iawarim i apu panua.
- VI. Bahi u tau rol.



VII. Bahi u ganawal.

VIII. Bahi u kaoma.

IX. Bahi u babaun gamagal erana.

X. Bahi matam i momoni gamagal wana limi, e bahi matam i momoni gamagal ragona ge, wana to tuarari melutau ge, wana to tuarari meluiowa ge, bulamakau ge, asa ge, gamagal wana bugul gegewena ge.

4—*Wara loneganega ta lopapit ta kululu.*

E Tamama to gasigasisina nabian ge to nunuana nabian; wam kamasa ama gewi abwe ha nogegi. Wam bapatanek bwabwarena nigeia ha henapoan. E nigeia ha hehegan bubun, e abwe ha papanak agiwa; ama to loneganega ha ora. E Iehova ha nuanak agiwa u nunuana agima. Wama loneganega ha lopapit, bahi u hawin agima. Iehova ama ha nuaren agiwa, bahi u rahema, i ora wam bateli Iesu Keriso i wasama. E Tamama to nunuana nabian, Iesu kaiwena u rabima iaka mura na ha henapo bubun, e aram bwabwarena na ha lowasawasa an. Emen.

5—*Taparoro ana kululu momoasena.*

Iesu Keriso Babara wana mimihikan ge, Iehova wana nunuana ge, Iaiarua Bwabwarena wana heliheliam ge. ni hi mina eriam a e bahi ni hi egon. Emen.

6—*Anan ana taparoro.*

Iehova Tamama, anan ia ge ama gegewena ge, u guiauan eriam a; ha murorowa bubun, atema owa i waisi. Emen.

## AWARIHINA IX.

BUKI BWABWARENA HOHOWENA ANA  
GAMAGAL.

1—*Henera Adama?*

Tau hohowena Iehova iaka i ginol ia kiragewi tamara.

2—*Henera Ivc?*

Iowa hohowena, ia kiragewi hinara.

3—*Henera Keni?*

Adama wana gamaun, ia tarina i lopariga.

4—*Henera Ebel?*

Keni tarina waiwaisana, i awanak an.

5—*Henara Inoke?*

Tau etega Iehova i nunuana, e iaka i ahe ia enatia raburabuma e nigeia i ariga.

6—*Henara Noa?*

Tau waiwaisama ia varira i mal waga, e gamagal gegewel hi iaomal hoga.

7—*Henara Abaraham?*

To aburirek tunahot Iehova wana heliam.

8—*Henara Aisake?*

Abarahama natuna i ora Iehova wana bateli.

9—*Henara Iakoba?*

Abarahama natuna labuina, arana Israeli i tun al.

10—*Henara Iosefa?*

Iakobo natuna nunuanina, ia tarinau hi awan-  
akan e hi papari ia to owan i ora.

11—*Henara Tonowakau crutega crua?*

Iakobo natunau, e gamagal Isaraeli tamariau.

12—*Henara Pero?*

Aigupito wari tonowak, ia Iehova wana gamagal  
i lopwari hi egon, e iaka i iaomal hoga keke-  
tina e aronau to hawin.

13—*Henara Mosese?*

Isaraeli natunau wari to baptanek ge to lopipomal  
ge, ia abwe i nulil urea.

14—*Henara Eroni?*

Mosese tarina e Isaraeli wari to powan bwab-  
watana.

15—*Henarau to powan?*

Borau hi mimaumau powan hi pek Iehova erana,  
e wana bapatanek hi papatena gamagal eral.

16—*Henara Iosua?*

Isaraeli wari asiara bwabwatana ia, Mosese i  
ariga, mura Isaraeli i nulil panua waiwai-  
sana.

17—*Henarau Paropita?*

Borau to henapo Iehova iaka i papatena e bugul  
abwe ni vin hi papatena.

18—*Henara Samuela?*

Paropita etaga e varira i wawaia Iehova i ioga  
an.

19—*Henara Davida?*

Isaraeli wari to wona, mura wari babara i mina-  
mina.



20—*Henara Abisalomi?*

Davidana natuna nanakina, ia tamana iaka i hawin  
an, e abwe i ariga ai ia.

21—*Henara Solomoni?*

Davidana natuna, gamagal wari to siba i bwata, e  
babara ia limi taparoro bwabwatana iaka i  
ginol.

22—*Henara Ilaia?*

Paropita etega, ginaha bugulina abwe i karivai  
ia raburabuma.

23—*Henara Daniela?*

Paropita etega, eia varira nuana i gasisi i  
taparoro iaka hi arilowan laioni ari abamina;  
e Iehova i matahikan i mal.

24—*Henarau Setareki ge, Mesake ge, Abedenego ge?*

Gamagal Israeli eton, kakanun nanakina nigeia  
hi kululu erana iaka hi arilowan ginaha  
limena, e negeia i wai.

---

## AWARIHINA X.

---

### BUKI BWABWARENA VAVARUNA ANA GAMAGAL.

---

1—*Henara Meri gamaina?*

Iesu hinana.

2—*Henara gamaqalau Iudia?*

Israeli natunau, heria Iehova i ahel eriana wana  
gamagal.



3—*Henarau Sentailiau?*

Gamagal gegewel toraha, nigea Iudia.

4—*Henara Augusto?*

Roma wari tonowak, saugu ia Iesu wara Babara i masal.

5—*Henara tonowak Herodi?*

Iudia wari tonowak, eia Bedeliim wari wawaiiau kekesi iaka i lopaariga, e i tage Iesu Keriso i lopaariga.

6—*Henara Ioane Bapitaiso?*

Paropita etega eia i papatena Iudia eral i ora Iesu Keriso iaki i vin.

7—*Henara Titaraki Herodi?*

Galili wari tonowak, eia Ioane Bapitaiso mama-lina iaka i gotoma.

8—*Henara Iesu Keriso tutunau?*

Heria i gewigewi hi hago an i ora wari Babara.

9—*Henara Lasaro?*

Maisena Iesu i nunuana, e i iaomal ran paeton abwe Ia i parut al.

10—*Henara Mareda?*

Lasaro nuna, eia varira i ginol bwabwatana hagari i pek Iesu erana.

11—*Henara Meri, Mareda nuna?*

Iowa ia bugulina waiwaisana iaka i ahe, e i misiu Iesu aena, e wana baba i hago.

12—*Henara Apositolo?*

Tutunau erutega erua Keriso iaka i ahel wana wasana waiwaisana to papatena e wana boda tonowakau hi ora.

13—*Henara Saimon Petero?*

Apositolo etega wara Babara iaka i muroro wana nowahe kaiwena; eia mura wana Babara i arahan, i kahikahin nabinabi. Ia nigeia i rahe; eia ran Penitiko i gan i papatena houwa.

14—*Henara Ioane Apositolo?*

Iesu tutuna i nunuana, e i misiu Iesu labena hagari momoasena.

15—*Henara Tomase?*

Apositolo etega, eia i houwa nigeia i aburirek Babara i rut al.

16—*Henara Iuda Isikariota?*

Apositolo nanakina, i babaun Babara i naroi.

17—*Henara Kaiapa?*

To powan bwabwatana iaka i lohu Keriso erana.

18—*Henara Ponitio Pilato?*

Iudia wari govena, eia iaka i pek Iesu hi korose erana.

19—*Henara Iosefa Arimadia?*

Tau to gogomau iaka i teli Iesu wana ariaria.

20—*Henara To wasana epat?*

Mataio ge, Mareko ge, Luka ge, Ioane ge; heria wasana waiwasana epat hi leleli.

21—*Henarau Ananiasa ge Sapaira?*

Tau ge ragona hi kakau i Iaiarua Bwabwarena erana kaiwena i tagapamatel.

22—*Henara Setepano?*

To howa hi lopaarigana Iesu Keriso kaiwena.

23—*Henara Paula?*

Apositolo etega i houwa i loapanawa, e mura  
Sentailiau wari to papatena i bwata.

24—*Henara Doreka?*

Iowa waiwaisana kama iaka i guiauan to rara-  
sara erial, e eia tomate ek i rut al.

25—*Henara Konelio?*

Tamatan hawin Sentailiau to taparoro e Petero  
iaka i nok i papatena.

26—*Henara Lidia?*

Iowa to taparoro atena Iehova i pwela varira  
Paula i papatena.

27—*Henara Apoloso?*

To papatena etega i baba bubun.

28—*Henara Taito?*

Paula arona etega al, eia i papatena panua Karite.

29—*Henara Timoti?*

Paula arona i rabe erana.





## PANUA MAMANANA ANA GINOL.

---

BUKI BWABWARENA HOHOWENA.

---

### AWARIHINA I.

---

1. Iehova raburabumi ge panua ge iaka i ginol hohowena.
2. E panua i nak, e i bokaboka; e gogo i mina matana. E Iehova Iaiaruana i gavai wewel patana.
3. E. Iehova abwe i ba, Mananal i gan; e mananal iaka i gan.
4. E Iehova abwe i kite mananal i waisi e Iehova mananal ge gogo i teli maumau.
5. E Iehova mananal arana i tun Ran, e gogo arana i tun Burin. E kokoiavi ge mereruga ge hi ora ran hohowena.
6. E Iehova abwe i ba, Bwaga i gan wewel ruaruara, e wewel ge wewel ge i teli maumau.
7. E Iehova bwaga iaka i ginol, e wewel bwaga gaburana ge wewel patana ge i teli maumau e iaka i ora.

8. E Iehova bwaga arana i tun Raburabum. E kokoiaivi ge mereruga ge hi ora ran eruana.
9. E Iehova abwe i ba, Wewel raburabum gaburana i sani gogo abamina maisena, e panua i gan: e iaka i ora.
10. E Iehova panua arana i tun Biribiri; e wewel i sanigogo i tun Hoga: e Iehova abwe i kite ia i waisi.
11. E Iehova abwe i ba, Biribiri i siuna uran ge riuriu ge patumina tomaha i enuenun, e ai enona i enuenun ia patumina tomaha i mina gamana panua: e iaka i ora.
12. E biribiri iaka i siuna uran, e riuriu enuenun, e ai-huaru enona i enuenun, ia patumina tomaha i mina gamana; e Iehova abwe i kite ia i waisi.
13. E kokoiaivi ge mereruga ge hi ora ran etonina.
14. E Iehova abwe i ba, Mananal i gan raburamum bwaga ran ge burin i pwela; e i minamina i ora murina ge, sauga ge, ran ge, bariman ge.
15. E i mananal raburabuma bwaga i pamananal panua; e iaka i ora.
16. E Iehova mananal bwabwatana erua abwe i ginol; mananal bwabwatana nabi ran i logugui, e mananal kekesi burin i logugui: e putum iaka i ginol.
17. E Iehova i telil raburabuma bwaga iaka i pamananal panua.
18. E hi logugui ran ge burin ge, e mananal ge gogo ge hi teli maumau: e Iehova i kite ia i waisi.
19. E kokoiaivi ge mereruga ge hi ora ran epatina.
20. E Iehova abwe i ba, Wewel i hul gegewena to tatanawanawa hi iawarina, e basumu hi iou panua enatia raburabuma bwaga matana.
21. E Iehova uruaras abwe i ginol, e to tatanawanawa hi iawarina gegewena, ia wewel i hul bwabwatana, e basumu opena gegewena tomaha: e Iehova i kite i waisi.

22. E Iehova i ba muroro agil i baba, Ku enon, ku logewigewi, e hoga ku pakalopop, e basumu hi logewigewi panua.
23. E kokoiavi ge mereruga ge hi ora ran nimana-panuna.
24. E Iehova abwe i ba, Panua i hul bugulina iawarina tomaha bulumakau ge sikakai ge, panua bugulina iawarina tomaha: e iaka i ora.
25. E Iehova panua agulena iawarina tomaha iaka i ginol, e bulumakau tomaha, e gegewena hi iawaiawal panua tomaha: e Iehova i kite ia iwaisi.
26. E Iehova abwe i ba, Ta ginol gamagal i ora wara kanukanun: e ni hi logugui hogana moti ge, raburabum ana basum ge, bulumakau ge, panua mamananana ge, to iawaiawal gegewena ge hi iawaiawal panua.
27. E Iehova gamagal iaka i ginol i ora kanukanuna, Iehova kanukanuna i ora iaka i ginol; melutau ge meluiowa ge iaka i ginol.
28. E Iehova i muroro agil, e Iehova abwe i baek eral, Ku au, e ku logewigewi, e panua ku pakalopop, e ku logugui; e hoga ana moti ge raburabum ana basum ge, bugulina iawarina gegewena hi tatanawa panua, ku logugui agil.
29. E Iehova abwe i ba, Ku kite, riuriu gegewena hi enona patumina, hi mina panua mamananana matana, e ai gegewena ia enona i enun patumina, abwe ea pewa eriamiu; amiu ku ahe.
30. E panua agulena iawarina, e raburabum ana basum gegewena ge, e bugul gegewena hi iawaiawal panua moruna i gan, riuriu i arawa gegewena ea pewa eriamiu amiu ku ahe: e iaka i ora.



31. E Iehova bugul gegewena i ginol abwe i kite, e ku tike, ia i waisi nabinabi. E kokoiaivi ge mereruga ge hi ora ran nimanapanuna maisena.

---

## AWARAHINA II.

---

1. E raburabum ge panua ge, ari tuburataine ge, iaka i ginol haba.
2. E ran nimanapanuna rabuina i gan Iehova wana tuarari i ginol iaka i moasi; e ran nimanapanuna rabuina wana tuarari i ginol iaka i veaho.
3. E Iehova ran nimanapanuna rabuina abwe i ba muroro e i teli bwabwarena: e ia kaiwena wana tuarari iaka i ginol i veaho.
4. E sauga iaia raburabum ge panua ge ari sauga iaka i ginol ran iaia Iehova panua ge raburabum ge iaka i ginol.
5. E eowa siunina gegewena varira nigeia i gan biribria, e eowa riuriuna gegewena varira nigeia i biribria, e eowa riuriuna gegewena varira nigeia i siun; e Iehova varira kehi nigeia i ginol, e nigeia i rauan panua, e nigeia gamagal etega biribiri i gial.
6. E bekubeku iaka i tagilek panua, e biribiri i pahunhun.
7. E Iehova panua biribirena iaka i ahe e gamagal i ginol, e iana iawarina i iawalbwehibwehi buhuna; e gamagal iaiaia i iawal.
8. E Iehova eowa etega abwe I ginol natiek Idena; e tau iaka i ginol i teli ia.
9. E ai gegewena matana i waisi enona amnana i waisi, Iehova i ginol biribiri hi siun; e iawarina ana ai i mina eowa ruaruara, e atena waiwaisana ge nanakina ge ana ai i mina.

10. E sinawel etega i sani Idena eowa i pahunhun; e i tatarek i ora sinawel epat.
11. Etega arana Paison: ia panua Havila bwaribwarigena i sani pipin, gola i mina.
12. E panua ia ana gola i waisi; e deliumi ge pat onikisa i minamina ia.
13. E sinawel rabuina arana Gihoni ia i ora panua Kusi bwaribwarigena i sani pipin.
14. E sinawel etonina Hidekeli; ia i sani Asiria matana. E sinawel epatina Euparetisa.
15. E Iehova tau abwe i ahe e i teli Idena ana eowa e i matahikan.
16. E Iehova i bapatanek tau erana i ora, Eowa ana ai gegewena u anan bubun;
17. E atena waiwaisana ge nanakina ana ai enona bahi u an: e ran ia abwe nu an nu ariga hot.
18. E Iehova i ba, Nigeia i waisi tau totona i minamina; to mimihikan etega ea ginol eriana.
19. E Iehova panua to iawal ge raburabum ana basum gegewena i ginol biribiria; e i pek Adama eriana i kite ia araria i tun eral: e araria ia i tun to iawarina gegewena araria i minamina.
20. E Adama bulumakau gegewena araria i tun, e raburabum ana basum, panua ana to iawal gegewena; e Adama wana to matahikan nigeia i gan.
21. E Iehova abwe i ginol ia i kenu ariga e matana i kenu ariga e matana i kenu: e ruruna etega i ahe e bunimina i kaus.
22. E Iehova ruruna i ahe tau eriana ia i ginol Iowa, e i pek ia tau erana.
23. E Adama abwe i ba, Eia tutu tutuana, e bunimiu bunimina: ia abwe ni hi rumen Iowa, kaiwena Iowa ia i ahe tau eriana.

24. Eia ana kaiwe tau etega tamana ge hinana ge ni eguruagil, e ni ahe ragona: e heria bunimina maisena abwe ni hi minamina.
25. E tau ge ragona hi bokaboka e nigeia hi puluaui.

---

### AWARIHINA III.

---

1. E weso basumu gegewena Iehova i ginol ari siba i rake. E i baek iowa erana, Tab Iehova i baek eram, Eowa ana ai gegewena bahi nu ku anan?
2. E iowa abwe i baek weso erana, Eowa ana ai enona ha an:
3. E ai i mina eowa ruaruara ana enona, Iehova i ba Bahi ku an, bahi ku pibose, binimara ku ora abwe nu ku ariga.
4. E weso i baek iowa erana, Nigeia ku ariga hot:
5. E Iehova i atena ran ia nu ku an inoke mataniui ni panana, e nu ku ora Iehova nu ku atena waiwaisana ge nanakina ge.
6. E iowa abwe i kite ai i waisi anan kaiwena, e matana i pawaisi, e ai i waisi i pasiba, e ia enona i kiba e i an, e i pek ragona eriana; e ragona i anan.
7. E heria mataria i panana e hi atena hi bokaboka; e iaka ai lamana hi helhel e ari kami hi ginol.
8. E Iehova anana i nawanawa eowe kokoiavi heria hi hago: e Adama ge ragona hi bunsume eowa ana ai Iehova eriana.
9. E Iehova i ioga Adama eriana, e i nel erana, Owa ga?
10. E ia i baek erana, Anam ea hago eowa, e ea rowakun kaiwena ea bokaboka; e ea bunsume.
11. E Ia i ba, Henara i baek eram u bokaboka? Tab u an ai i ora ea bapatanek bahi u an?
12. E tau i ba, Iowa ia u pem eriau, ai enona i pem eriau e ea anan.



13. E Iehova abwe i baek iowa erana, Hauna bugul u ginol? E iowa i baek erana, Weso i para-wakikau e ea anan.
14. E Iehova i baek weso erana, Wam ginorina ia kaiwena bulumakau gegewena ge panua to iawal ge ari to nanakina bwabwatana owa u ora; tinema u iawaiwal e biribiri u an iawarim ana ran gegewena:
15. E iowa ge owa ge natunau ge uruvi na teli erialil; ia kokoam abwe ni rol, e aena gunina abwe nu rol.
16. E i baek iowa erana wam kahikahin ge wam rian ge ea lobwata; e abwe nu ab nu kahikahin e nuam i nek ragona erana e i logugui eram.
17. E i baek Adama erana, Ragona anana u hagoan e ai enona toto ea baek eram, Bahi u anan: eia kaiwena biribiri i nak kaiwem, nu anan e nu kahikahin iawarim ana ran gegewena:
18. Uaruaru abwe ni siun eriam, eowa ana riuriu nu anan;
19. Anan nu an maninim i arutan, e abwe nu sikel biribiri; e biribiri ek ea ahewa: e biribiri u ora, e abwe nu sikel biribiria.
20. E Adama ragona i rumen Ive; kaiwena to iawarina hinana.
21. E Iehova abwe i ginol kama kunisina Adama ge ragona erial, e i garoil.
22. E Iehova abwe i ba, Ku kite, gamagal i ora kira maisera, i atena waiwaisana ge nanakina ge, e ebo nimana i paeru e ai iawarina enona ni kibwa, i anan e iawarina nigeia ni momoasi.
23. E Iehova i patunal Idena hi eguruaii abwe biribiri varira i ahel hi gial.
24. E gamagal abwe i teli tora; e eowa Idena enatiek abwe i teli Serubimi e kaini pataona etega i tata pipin, ai iawarina ana kamasa i matakikan.

# BUKI TAPARORO VAVARUNA.

---

IEUS KERISO WAWAIA.

---

MATAIO.

---

AWARIHINA I. 18-25.

- 
18. E Iesu Keriso wana masal abwe i ora: Ia hinana Meri i kawakawarorun Iosefa, varira i nok erana inoke i rian Iaiarua Bwabwarena iaka i ginol.
  19. E inoke ragona Iosefa, tau i sapisapu, nigeia nuana i lopapit, e nuana i eguruan.
  20. E bugal ia i nopitone, inoke, Iehova wana anelose etega i pankite totona ia i kenuno, i baba, Iosefa, Davida natuna owa, bahi u rowakun Meri ragom u aroron an; e bugul i rian Iaiarua Bwabwarena i pamasal.
  21. E abwe natuna melutau i ab, e Ia arana abwe nu tun Iesu: a Ia wana gamagal wari loneganega i rake.
  22. E bugul ia i gan kaiwena Iehova wana baba paropita i leleli.
  23. U kite nuabora etega i rian natuna melutau abwe ni ab, e Ia arana ni hi tun Imanuel, arana bapuna i ora Iehova i minamina eriara.
  24. E Iosefa abwe i rut, iaka i ginol i ora Iehova i logugui erana e ragona abwe i aroroan:

25. E nigeia i nok erana e ia natuna melutau wana gamaun iaka i ab: e Ia arana abwe i tun Iesu.

---

## AWARIHINA II.

---

1. E Iesu iaka i masal Bedeliim panua Iudia barbara Herodi wana sauga inoke borau to siba hi ahem Ierusalem hi baba.
2. Toto i ab Iudia wari Babara ga? E wana putum ha kite enatia, e ha nem iaka ha lowassawasa an.
3. E babara Herodi abwe i hago inoke nuana i nak e Ierusalem hi gewigewi hi ora.
4. E Topowan bwabwatana ge Towawasili ge abwe i ioga agil, inoke i nelil Keriso ga i masal?
5. E heria hi baek erana Bedeliim panua Iudia: e paropita iaka i leleli i ora.
6. E owa, Bedeliim panua Iudia ana tonowakau nigeia kekesi i ora, e owa ek Goveni etega abwe ni nem, Ia no gamagal Israeli abwe ni logugui agil.
7. E Herodi borau to siba i ioga agil hi mimaumau inoke i nelil gagasisi hawanela putum i gan.
8. E ia i patunal Bedeliim e i ba, Ku na wawaia kekesi ku loa an; e abwe nu ku ahe ia, wasana nu ku patanem, iaka nau ge na nok e na lowasawasan.
9. E heria babara iaka hi hago inoke hi egon; e nu kite putum ia hi kite natio i nulil, e i vin i hul hikan wawaia kekesi aba mina enatia.
10. E putum hi kite inoke nuaria i waisi hi iariaia.



11. E limi hi iawaltuk inoke hi kite wawaia kekesi arona hinana Meri, e hi kululu, e hi lowasawasan: e wari gogomau hi pwela, inoke bugul i guiau an; gola ge, paranikisene ge, enonu ge.
12. E Iehova i lopwaril wari kenuno, bahi ni hi sikel Herodi erana e kamasa getoga hi nok wari panua.
13. E abwe hi egon inoke Iehova wana anelose etega i pankite Iosefa erana i kenuno, i baba, U rut e wawaia kekesi ge hinana ge u ahewa, e u lou Aigupito erana, e nu mina e baba abwe na pataniwa: e Herodi abwe ni loa wawaia kekesi ni lopaarigana.
14. E ia i rut inoke wawaia kekesi ge hinana ge i ahel burina e iaka i egon Aigupito:
15. E i mina abwe Herodi i ariga: iaka baba Iehova wana paropito i ba, i ginol haba i ora Aigupito ek na natu ea ioga an.
16. E Herodi abwe i kite borau to atena hi kakau, inoke i hawin bwabwatana e i patuna e Bedeliim ana wawaiau gegewena i lopaarigal, e panua ia gegewena, wawaiau wari sauga bariman etega e bariman erua i ora sauga varira borau to siba i nelil gagasisi.
17. Inoke baba paropita Ieremaia i ba iaka i ginol haba, i ora.
18. Anana etega hi hago Rema kahin lopili ge, kahikahin ge, kahikahin bwabwatana ge, Resieli natunau baaena i kahikahin wana kahin nigeia i moasi, heria hi ariga kaiwena.
19. E Herodi abwe i ariga, e inoke Iehova wana anelose etega i pankite Iosefa i kenuno Aigupito, i baba.

20. U rut, e wawaia kekesi ge hinana ge u ahel, e u na Iseraeli wari panua: e heria wawaia kekesi iawarina hi loa, iaka i ariga.
21. E ia iaka i rut, e wawaia ge hinana ge i ahel, e i nem Isaraeli wari panua.
22. E abwe i hago Arikila tamana i ariga i logugui panua Iudia, e i rowakun nigeia nuana ni nok: e Iehova i lopwari i kenuno, i egon panua Galili.
23. E abwe i mina awan Nasaredi: iaka baba Paropitau hi ba i ginol haba, i ora. Ia abwe arana ni hi tun Nasarena.



## LUKA.

### AWARIHINA II.

1. E ran ia abwe Kesara Augusto i bapatanek gamagal gegewel araria hi leleli.
2. E bugul ia i ginol houwa Kurenio Suria tonowakina wana sauga.
3. E hi gewigewi hi na araria hi leleli wari awan tomaha.
4. E Iosefa ge Galili ana awan Nasareda abwe i tagilek, i na Davida wana awan arana Bedeliim; (e ana un i ora Davida ana un;)
5. Ia ge Meri ragona i rian ge araria hi leleli.
6. E abwe i ora ia heria i mina, iowa wana sauga iaka i gan.
7. E natuna melutau gamaun iaka i ab, e ana kama i os erana, e i teli dedewaga gamana; eia kaiwena nigeia wari abamina i gan limia bwabwatana.
8. E sipi to matahikan hi mina eowa panua ia, wari sipi hi matahikagil burina.
9. E, u kite, Iehova wana anelose etega i lau erialil, e Iehova wana wasawasa i paianaiana pipin erial: e hi rowakun bwabwatana.
10. E anelose abwe i baek eral, Bahi ku rowakun e ku kite ea patanem wasana waiwaisana ana iariaia i bwata, e gamagal hi gewigewi abwe ni hi ahe.



11. E ran ia Davida wana awan to pamal etega i masal, eia Babara Keriso.
12. E murina na baunan eriamitu; Wawaia ana kama i garoi i kenu dedewaga gamana abwe nu ku kite.
13. E inoke anelose aronau tuburataine raburabum gamagaliliau hi lowasawasa Iehova, e i baba.
14. Wasawasa i gan Iehova erana enatia e panua melteli i mina nunuana gamagal agil.
15. E abwe i ora ia aneloseau iaka hi egon raburabuma, sipi to matahikan hi baek eral, Ta egon Bedeliim, e ta kite bugul ia i gan Iehova i pankitera.
16. E hi na etimawa, e Meri ge Iosefa ge, wawaia i mina dedewaga gamana ge hi kitel.
17. E abwe hi kite, inoke wasana wawaia bana hi ba erial heria hi pek gewel.
18. E gamagal gegewel hi hago ateria i iou baba kaiwena sipi to matahikan hi baunan erialil.
19. E Meri bugul ia i nuahikan, e i nopitone atena.
20. E sipi to matahikan hi sikelim, Iehova hi lowasawasa e hi tobal bugul ia kaiwena hi hago ge hi kite ge i ora hi baek erial.
21. E ran nimanapanuna eton abwe i gan wawaia hi kaine i pwan la arana hi tun Iesu, i ora arana anelose i tun varira iowa i rian.
22. E iowa tini haharana ana ran i ora Mosese wana bapatanek abwe i gan, hi patanem ia Ierusalem, hi pankite Iehova eriana.
23. (I ora Iehova wana bapatanek i wawasili, Melutau gegewel hi masal hi ora bwabwarena Iehova erana.)
24. E powan i pek i ora Iehova wana bapatanek i ba, bunibuni erua, e bunibuni natunau erua.

25. E u kite, tau etega i mina Ierusalem, arana Simioni: e tau wana pagan i waisi; e i taparoro, e i matamatan Iseraeli wari to pamal: e Iaiarua Bwabwarena i mina eriana.
26. E Iaiarua Bwabwarena i pankite eriana Keriso Babara i kite howa mura i ariga.
27. E Iaiarua i nul an i na abagogo bwabwatana: e tamana ge hinana ge wawaiana Iesu hi patanem, hi ginol erana i ora bapatanek ana pagan.
28. Inoke Simioni wawaia i ahe i lulubo, e Iehova i lowasawasan e i ba,
29. E Iehova u patunau nu egon i waisi, i ora wam baba,
30. E matau i kite wam pamal,
31. Eia u ginol gamagal gegewel mataria;
32. Mananal etega i pamasal Sentailiau, e wam gamagal Isaraeli wari wasawasa.
33. E tamana ge hinana ge aterial i iou bugul i baunan kaiwena.
34. E Simioni i ba muroro agil e i baek Meri erana U kite, wawaia ia gamagal gegewel Ieraeli abwe ni pasogu, e ni parut; e etutuhi hi ba kaus.
35. (E kaini etega abwe i howa iairuam) e iaka atera gegewena ana nopitone ni pankite.
36. E iowa etega arana Ana ia paropita Panuela natuna, ana un Asera: e ia i liki: i aroron bariman nimanapanuna erua.
37. E i kabukabu bariman erurupit epat, e ia abagogo i mimina nigeia i tagelik e i henapo e i taparoro ran ge burin ge.
38. E ia i iawaltuk i muroro Iehova erana, e wasana i baek gegewel heria hi matamatan pamal Ierusalem.
39. E bugul gegewena i ora Iehova wana bapatanek abwe i ginol inoke i sikel Galili, wari awan Nasareda.

40. E wawaia abwe i lobwata, e iaia ruana i gagasisi,  
siba gegewena i ahe, e lehova i rabe.
41. E tamana ge hinana bariman gegewena Pasova  
ana hagari kaiwena hi nok Ierusalem.
42. E wana bariman erutega erua i ora, hi nok  
Ierusalem hi ora hagari ana pagan,
43. E ran ia abwe i moasi, heria hi sikel wawaia i  
mina Ierusalem. E tamana ge hinana ge  
nigeia hi atena;
44. E heria hi tage ia i minek borau eral, e hi na ran  
paetega; e ari un ge gamagal aronau ge hi loia  
an.
45. E nigeia hi kite ia, hi sikel Ierusalem hi loia an.
46. E abwe i ora ran eton i gan mura hi kite ia  
abagogoa, i misi to siba tonowakau erial e i  
hago agil e i nelil.
47. E hi gewigewi hi hago an aterial hi iou Ia siba ge  
baba ge ana kaiwe.
48. E abwe hi kite ia aterial hi iou e hinana abwe i  
baek erana, Natu ga u ora u ginol agima? U  
kite tamam ge nau ge ha loia agiwa ha  
kahikahin.
49. E Ia i baek erana, Ga ku ora ku loia agau?  
Nigeia ku atena Nau Nam tuarari ea ginol?
50. E heria nigeia hi atena baba Ia i baek eral.
51. E Ia i na Nasareda erial, e i henapo agil; e  
hinana baba ia gegewena i nuahikan atena.
52. E Iesu abwe i lobwata siba ge tauna ge, e lehova  
ge gamagal ge hi numuana an.





# TAPARORO ANA WONA

THE TAPARORO ANA WONA

THE TAPARORO ANA WONA

THE TAPARORO ANA WONA

THE TAPARORO ANA WONA

THE TAPARORO ANA WONA

THE TAPARORO ANA WONA

THE TAPARORO ANA WONA

THE TAPARORO ANA WONA

THE TAPARORO ANA WONA

THE TAPARORO ANA WONA

THE TAPARORO ANA WONA

THE TAPARORO ANA WONA

THE TAPARORO ANA WONA

THE TAPARORO ANA WONA

THE TAPARORO ANA WONA

THE TAPARORO ANA WONA

# TAPARORO ANA WONA

---

1

IESU TA WONA WONA.

---

Iesu wona wona,  
Eia i bwaiana,  
Iesu ta liwaliwan  
Erana waiwaisana.

Iesu ta wona wona,  
Ge ta wawasana,  
I bwaia nunuana,  
Iesu i wasawasa.

Raurau sariana  
Lahena wara pagan,  
Iesu i moru ara  
I mina wara powan.

Bahi ta nuruan  
Babara nabiana,  
Iesu i araaran,  
To wona bwabwatana.

S. B. Fellows.

## IAIRUAU WONANA.

---

Iaiaruau Iesu nunuama,  
Owa nunuau ea ahewahewa,  
Owa u aheau ea patarem,  
Iaiaruau abwe nu pataniwa.

Babara Iesu u mihikagau,  
Ea lopapit neganega agiwa,  
Ea nuaren bahi u raheau,  
Iaiaruau abwe nu pataniwa.

Iesus nu mina eriau  
Iaka henapo bubun na pewa,  
Iawarii nu nopawau,  
Iaiaruau abwe nu pataniwa.

Wam abamina raburabuma,  
Abwe na nowa na nakitewa,  
No aba mina nuau nu ora,  
Iaiaruau abwe nu pataniwa.

—S.B.F.

## IESU HELIARA.

---

Iesu heliara waina  
I gasisi nabian,  
Wara bugul gegewena  
I ba ta kululuan;  
Wara pagan nanakina  
Ebo ta nuarenan,  
Iesu wara powanina  
Agira i nunuan.



Ebo Setan neganega  
 I parawakikira,  
 Iesu kira nunuana  
 Abwe ni parorira;  
 E rowakun i moasi  
 Iesu e ni ahera,  
 I waisi nabinabi  
 E ni mihikagira.

Iesu i hago ta kahin  
 I luvivin agira,  
 I kitera ta retan  
 E i atupahera;  
 Binimara ta kululu  
 Etimawa u rabima,  
 Ni lulubo patareru  
 Abwe ni hihinira.

—S.B.F.

---

4.

EABOAINÉ GINORINA.

---

Gamagal gewi ku wona  
 Eaboaine erana,  
 Ku mina wana limia  
 Ku iariaia waisana.

Eaboaine Iehova,  
 Tuburau ge kira gewi  
 Abwe i ginol varira,  
 Iawarira ge i teli.

Ara maru i guiau,  
 Kehi ge numa i rauan,  
 E wara bugul gogomau  
 Tamara i araaran.

Taparoro i patuna,  
Wasana i waisi i vin,  
Gamagal hi henapoan,  
Iaka panua i raumal.

Eaboaine Tamara,  
Natuna Iesu Keriso,  
Iaiarua Bwabwarena,  
I waisi ta muroro.

—S.B.F.

— — —

5.

SINAWEL I WAISI.

— — —

Sinawel i waisi nabi,  
Minamina raburabuma,  
Nigeia kekepa i sani,  
I sani Iehova limio.

Abwe ta nogogo sinawelia,  
Sinawel i ianaiana i sani,  
Ta nogogo panua ana un ia,  
Sinawelina i waisi.

Tabo ta na sinawel ia  
Retan ge iaomal ni moasi,  
Inoke ta iariaia  
E ta wona gagasisi.

E abwe ta nawanawa  
E aromiau heliama  
Sinawel i rabena kamasa,  
Ta nogogo bahena ni busau.

—S.B.F.

## IESU WANA BATELI.

Baba Iesu ea hagoan,  
 U nem ga eriau  
 To esai u veahoan  
 Nuau ea guiau.

Iesu Keriso i miraheau  
 Ea aburirek erana,  
 Iesu Keriso i miraheau  
 Ea nunuana an.

Ea nok Iesu eriana  
 Ea esai ea nuaren,  
 Ea veaho nunuana,  
 Iariaia nabian.

Baba Iesu ea hagoan  
 Sabweru nau ea ora,  
 Ebo atem i gogoan  
 Ea paianaiana.

E ea gagaiawa Iesu  
 I paianaiana ateu,  
 Mura abwe na henapoan  
 Eia na nunuau.

—S.B.F.

## TAPARORO KIRARINA.

Taparoro patumina ta ioho,  
 Panua i ran ge i kokoiaivi;  
 Ta matamatan siunina i lobwata,  
 E ta iariaia enona ta ahe.



Enona ta ahe, enona ta ahe,  
 Wara taparoro enona ta ahe,  
 Enona ta ahe, enona ta ahe,  
 E ta iariaia enona ta ahe.

Sabweru i ianaiana ta iohi,  
 Bahi ta rowakun bugul i nakal,  
 Tabo patumina ni enun ni pohaka,  
 E ta iariaia, enona ta ahe,

Wara Eaboaine wana tuarari  
 Wana taparoro ta iohian,  
 Tabo wara tuarari ni buasi,  
 Ni rokani agira ta veahoan.

—S.B.F.

---

8.

WAWAIAU WONARIE.

---

Iesu abwe i mina  
 Panua eriana,  
 Gamagal gegewena  
 Wawaiaiu nunuana.

Wawaiaiu hinaria  
 Abwe i nok erana,  
 I ahel nuaria  
 I pibosel nimana.

Iesu tutunau hi ba  
 Komiu bahi ku nem,  
 Iesu i hago i ba  
 Wawaiaiu ku patanem.

Wawaiau hi pek ona  
 Iesu i luluboil,  
 I paerul nimana,  
 Inoke i kukulel.

Iesu i waisi owa,  
 E u mina atema.  
 Ha nunuana agiwa,  
 Ha ahewa, u ahema.

—S.B.F.

## 9.

## NA NOK IESU ERANA.

Varira beaunana  
 Iesu panua i rauan.  
 Iawarina i moasi  
 Abwe i egon hevan.

Abwe no nok Iesu ena.

Iesu wasana ea atena.  
 I bapatanek eriau,  
 E ateu ea pek erana  
 Iesu i pahenapoau.

Pilgrim nau ea nawanawa,  
 Pilgrim nau ea egunan.  
 Iawariu ni moasi  
 Inoke na na hevan.

Iesu kamasa i atena  
 E abwe i pamulau,  
 Iesu nau nunuana  
 E abwe ni nopawau.

—S.B.F.

## 10.

## BURIN ANA WONA.

---

Tamama Eaboaine  
 U mina eriana,  
 U matahikagima,  
 Wama gogo u iane.

Iesu To lopipomal  
 Nanakina u rake,  
 E atema u papaul,  
 Wama gogo u iane.

Iaiarua Bwabwarena  
 Amagewi u ahe,  
 U ginol bwabwarena,  
 Wama gogo u iane.

Amitoto eton ku ora  
 Etega Eaboaine,  
 U mimihikagima,  
 Wama gogo u iane.

—S.B.F.

## 11.

## RAN ANA WONA.

---

Hilahila i ha ara  
 Ta nek Eaboaine,  
 E ta kululu an ara  
 Ta wona muroro.



Atema owa Tamama  
 E u matahikan,  
 E u teli iawarima,  
 Ama u araaran

Iesu Keriso Babara  
 U rabima ebe,  
 Iaiarua Bwabwarena  
 Atema u teli.

E Iesu u paatenama  
 Baba ha laegan,  
 Annam u pem eriana  
 Bubun ha hehegan.

Nu nulima ni waisi  
 Na ha henapoan,  
 Ebo nanakina ni vin  
 Nu pabakuhuan.

—S. B. F.

---

12.

HALELUIA IESU.

---

Ta loneganega an  
 Eaboaine erana,  
 Eaboaine erana,  
 Ta loneganega an.

Haleluia Iesu,  
 I ariga i mirahera,  
 I ariga i mirahera,  
 Haleluia Iesu.

Kira ta eowaru,  
 Wara powan nigeia i gan,  
 Wara powan nigeia i gan,  
 Kira ta eowaru.

Eaboaine,  
 Ta powan an Iesu,  
 Ta powan an Iesu,  
 Eaboaine.

I lopipomalila,  
 Iesu Keriso kaiwena,  
 Iesu Keriso kaiwena,  
 I lopipomalila.

—S.B.I

### 13.

#### IESU ARANA.

Eaboaine varira  
 I pana nunuana  
 Ta gewigewi agira  
 Panua mamanana.

Iesu arana ta wona,  
 Iesu arana waisana,  
 Arana bwabwarena  
 I waisi nabi.

Natuna i guiauan  
 I pana nunuana,  
 I miora wara powan,  
 Iesu i tun arana.

Kira nigeia ta ariga  
 I pana nunuana,  
 Iesu nigeia i rahera  
 Ta aburirek arana.

Ginorina bwabwarena  
 I pana nunuana,  
 Abwe ni nem ni ahera  
 Ta nunuana arana.

—S.B.F.

## 14.

## IESU WANA WASAWASA.

Ta henapo, ta henapo,  
 Iesu eriana,  
 Iesu Tutura i waina  
 Ta henapoan.

Iesu i wasawasa,  
 Kira i pamalila,  
 Iesu i wasawasa,  
 Ta lowasa an.

E wawaiau, e wawaiau,  
 Iesu nunuana,  
 Ateria i ianaiana,  
 I luluboil.

I ahera, i ahera,  
 Iesu eriana,  
 Ebo atera i ianaiana,  
 E i ahera.

Ni logogo, ni logogo,  
 Tutunau gegewel,  
 Ateria i ianaiana,  
 Ni logogoil.

—S.B.F.



## 15.

## TAPARORO ANA WAGA.

Taparoro ana waga, Iesu.  
 Wana waga i abubun;  
 Iesu kira i usanira  
 Ta na raburabuma.

Ta rauaha waga, taparoro waga,  
 Nigeia ta gailau ara;  
 Iesu kira i usanira  
 Ta na raburabuma.

Etimawa ta rauaha, e ta waiwai,  
 Ta kuki enatia,  
 Iesu tutunau kira to ora,  
 Wana waga i vevehi.

Waga taparoro nigeia i luna.  
 Nigeia i mamaro,  
 Iesu garowa i atena  
 E abwe ta mal tunahot.

—S.B.F.

## 16.

## IESU IAWARIU.

Iesu iawariu, Iesu iawariu,  
 Amnana waiwaisana, Amnana Iesu.

Haleluia ha ahewa, Haleluia Iesu,  
 Haleluia ha ahema, U ahema Iesu.

Iesu iawariu, Iesu iawariu,  
 Kahikahin bwabwatana, Wana rahe Iesu

Iesu iawariu, Iesu iawariu,  
Iariaia mamanana, Nunuana Iesu.

Iesu iawariu, Iesu iawariu,  
Taparoro ea henapo, Ea henapo Iesu.

Iesu iawariu, Iesu iawariu,  
Taparoro papaatena, Papaatena Iesu.

Iesu iawariu, Iesu iawariu,  
No panua raburabum, Wana panua Iesu.

—S.B.F.

# 17.

## EA NOWA IESU.

Iesu Keriso I ba,  
Wana baba Ea hago:  
Nuau ateu u paiana  
Sariam waiwaisana.

Ea nowa Iesu,  
Iesu ea nowa,  
Ateu u paiana  
To lopipomal Iesu.

Ateu inak nabi,  
Iesu u pamoruau,  
Nuau Iesu u sawarat,  
Ateu no pek Iesu.

Ēbo na nok Iesu,  
Iesu nu rabeau,  
Sariana i sanisani  
Iesu i lopipomal.

Ateu owa Iesu,  
 Sariam ea muroro,  
 Ateu etimawa ea pewa,  
 Iesu u aheau.

—J. R. Williams

## 18.

## RABURABUMA.

Raburabuma  
 Ta nowa ga,  
 Arorau nihi gewi  
     Aneloseau;  
 Hi wona nabian  
 Iesu hi lowasan  
 Hi wona waisana,  
 Iesu kaiwena.

Raburabuma  
 Taegonan,  
 Ga kuora ku ma:  
     Ta iaomal;  
 Mura ta waisi  
 Nanakina besi,  
 Abwe ta wona  
 Iesu kaiwena.

Kahikahin nigeia  
 Raburabuma,  
 Tamara i mina  
     Raburabuma,  
 Logugui nuara  
 Taparoro ta ahe,  
 Babara Keriso  
 Ana-kaiweu.

—J.R.W.



## NIGE NOGUN KAUSINA.

Raburabum nogunina  
 Ranebe i mapwela,  
 Abwe na nok arou Iesu  
 I nunuana nabi.

Tabwe Iesu nau kaiweu  
 Nogun abwe i pipwela.  
 Age? Age?  
 Nige nogun kausina.

Nogun i mapwela nabi,  
 Ebo ta ahe Iesu,  
 Abwe ta hek enatia  
 Kira panua nabi.

Ebo ta taparoro hot,  
 Nige nogun kausina,  
 Ta taga kaus nogun ia,  
 Ebo ta towan Iesu.

Eaboaine ta ahe,  
 Bapuna taparoro,  
 Iesu Keriso totona,  
 Kira i pamalila.

—J.R.W

## IESU I NUNUANA.

Taparoro i wasa  
 Iesu i nunuana  
 To henapu tutunau  
 I pagasisi agil.

Iesu nuana,  
 Nau I aheau.  
 Nuau ea ahe.  
 Iesu nunuanina.

Iesu I nunuana,  
 Nau kaiweu i iaomal,  
 Nogun i mapwela hot  
 Raburabuma na nok.

Iesu i nunuana  
 Tunahot i rabeau,  
 Ebo ea henapoan,  
 Nau abwe na nok hevan.

—J.R.W.

## 21.

## ADAMA TUBUNA KIRA.

Logugui varira  
 Abwe i pek Adama  
 Bapataneke Idena i apanak;  
 Adama tubuna  
 Wana pagan i gan ia,  
 Nanakina i mina eriara.

Iehova natuna varira i rau panua,  
 Iawarina morana bwabwatana.

Adama tubuna,  
 Iora erana,  
 Adama tubuna kira gewi;  
 Gamagal sisigana  
 Kira ta ora,  
 Nige ta hago bubun Iehova.

E Iesu u rabe owa ama ha ahe,  
 Kamasa Setani i kom nabi.

Taparoro wasana  
 I waisi ariga,  
 Iesu Keriso i abubunira  
 Ebo ta aburirek  
 Iesu nuana i nek,  
 Aronau ia kira raburabuma.

Eaboaine abwe u pankite,  
 Atema owa nabi Iesu i waisi.

—J.R.W.

## 22.

## RAN SABATA.

Kira gewi nuara i waisi,  
 Ran Sabata abwe i vin  
 Wara tuarari ta tataruaii,  
 Wewel hevan kira ta im.

Ebo ta garebu ta awanun,  
 Moru ana anan Iesu,  
 Ia wara mwagamwaga i pa hunhun  
 Ia i paanan beseu.

Ran hi gewi ta nawa panua  
 Wara tuarari i gan,  
 Ranebe kaiwena ta mina ta wona,  
 Nolu waga abwe i tan.

Eaboaine natum ana ran,  
 E Tamama atema owa,  
 Natum i huwe ha nak ha retan  
 Sawasawal eriana.



Tananawa Iesu eriana,  
 Ia wasana waiwaisana,  
 Ebo ta retan nabi i sawarira,  
 Iesu ginolina i ora.

Ranebe kira ta taparoro,  
 Bwariga abwe ta henapu,  
 Kamasa raburabuma i ora hot,  
 Ta ahe ia hevan ta nok.

—J.R.W.

## 23.

## IAIARUA BWABWARENA.

Eaboaine Iehova  
 Nuama u patuna,  
 Iaiarua Bwabwarena  
 Ha matamatan erana:  
 Iaiarua Bwabwarena  
 I ora hot Iehova,  
 Ta awanun eriana  
 Ni nem ni lau patara.

Iaiarua Bwabwarena,  
 U lau eriana;  
 Ha awanun bwabwatana,  
 U paiana atema.

Iaiarua Bwabwarena  
 Nuama u ha ahewa,  
 Bahi u kaise erama  
 Bateli Iesu kaiwena:  
 Iaiarua Bwabwarena,  
 U nem u lau patama,  
 Musamusa atema  
 Owa u harahara.

Ebo wara neganega  
 Abwe ni wai haba,  
 Musamusa nanakina  
 Ni pakara atera;  
 Iaiarua Bwabwarena  
 Ginaha owa u ora,  
 Nanakina atema  
 Owa u pataona.

--J.R.W.

---

24.

U MINA ERAU.

---

U mina kerauba ni burin,  
 Gogau mi nenem Babara u mina;  
 Gamagal wari rabi i moasi,  
 E Iesu to rabe u mina erau.

Panua ana waisi abwe i moasi,  
 Bugul gegewena abwe nihi pwaha,  
 Iawariu ana sauga i kauba,  
 Iesu moru puna u mina erau.

Iesu arau owa ran gegewena  
 Owa kaiwem Setani iaka i rau:  
 U nulau kamasa u panana,  
 Iesu tomuroro mina erau.

Iesu nuau ta heliheliam,  
 Abwe rowakun ni moasi hot,  
 Setani ge rawakik hi pweata,  
 Ea gasisi ebo numina erau.

Iaomal ana sauga abwe ni gan,  
 Hevan ana nog nu pankiteau,  
 Abwe na iawaltuk wam panua,  
 Sauga gegewena nu mina erau.

—J.R.W.

## NU NULAU IESU ERANA.

---

Nuau nulau Iesu erana  
 U patenau na nunuana ;  
 Ia topamal na aburirekan  
 Ebo kamasa nu pamasal.

Wasa ea hago Iesu i waisi,  
 Wana pagan waiwaisana hot,  
 Wawaiau i ioga tage ni ahe,  
 Nuau i nekan wawaiau nau.

Iesu ea nenem owa topamal,  
 Nau ea nuaren u aheau.  
 No loneganega ea pewa haba,  
 Owa u rake amnam u pem.

—J.R.W.

---

## PANAEAU I ANA MANANAL.

---

Panaeau i iaomal gogo gamana,  
 Mananal puna hot Iesu :  
 I ora sabweru ia i paiana,  
 Mananal puna hot Iesu.

Mananal ia iana kaiweu,  
 Varira nau iaka ea gogou,  
 I panana abwe ea kite,  
 Mananal puna hot Iesu.



Ta mina Iesu abwe gogo niso,  
E wara tonul i nulila bubun.

Komiu matamiu neganega i kaus,  
Matamiu ku ul abwe nu ku kite.

Hevan panua ianaiana i ba,  
Iesu wana sabweru iaka i gan.

—J.R.W.

---

27.

TA LOWASAWASAN.

---

Iesu heria hi lokorosan,  
Ta lowasawasan;  
Komiu ku nem ta muroro,  
Ta lowasawasan.

Iesu Iesu ea tobal nabi,  
Ea nunuana tunahot,  
Ateu i waiwai kaiwena,  
Ta lowaswasan.

Kamasa i abubun,  
Abwe ea mal ana kaiwe.

No nak Iesu iaka i rake,  
Kamasa hevan ea mimina.

Tuau abwe i ariga hot,  
Na morual raburabuma.

Abwe na wona no muroro,  
Kaiwena Iesu i pamorau.

—J.R.W.

## TOTO NUANA.

---

Toto i hago ni loi nabian,  
 Iesu i pamasal wara top mal,  
 Wasa waiwaisana kira ta wasan;  
 Toto nuana ni nem.

Toto nuana, toto nuana,  
 Gamagal gegewena nuku wasa?  
 Tamara nunuana puna i ba,  
 Toto nuana ni nem.

Toto i nenem bahi esowal,  
 Nogun i mapwela u iawaltukal,  
 Iesu kamasa nigeia getoga;  
 Toto nuana ni nem.

Toto nuana Iesu i bateli,  
 Toto nuana ni pamal tunahot,  
 Toto nuana ni ahe hevani;  
 Toto nuana ni nem.

—J.R.W.

---

## ANELOEAU WASARIA.

---

Aneloseau hi gewi  
 Hi iou panaeauui,  
 Wasawasa hi pabwaia,  
 Iesu iaka I masal.

Ta muroro, ta muroro,  
 Iesu wara Babara.

Burin borau hi mimina,  
 Sipi hi matamatan.  
 Anelose hi wowona,  
 Iesu ia to pamal i gan.

Komiu to loneganega,  
 Iesu ku gagaiawan,  
 Komiu Keriso ku loaia,  
 E ni masal eramiu.

Kira to ekalesia,  
 Ta muroro nabian,  
 Keriso wara topamal,  
 Abwe i pamalila.

—J.R.W.

30.

# ATEU U ULUL.

Iesu Babara nuau na moru hot,  
 Owa totom Nu mina ateu,  
 Nopagan nanakina U lekalekan  
 Ateu U ulul e na ianaiana.

Ianaiana, ianaiana hot,  
 Sauga ia U ulul,  
 Ena ianaiana.

Iesu bugul ia nuau irek nabi,  
 Ana musa to sigasiga hot nau,  
 Iaiaruam Nu pem e ni patenau,  
 Abwe na aburirek eram Iesu.

Babara U rabeau E U kite,  
 Pagan nanakina ea esian hot,  
 Tuau ge ateu ea pewa eram,  
 No nak U rake e na ianaiana.



Iesu sariam ea muroro nabi,  
 Puna no nak iaka i pamoasi,  
 Ran gegewena ateu U ulul,  
 Nige ni biki al ni ianaiana.

—J.R.W.

## 31.

## IESU NI NENEM.

Iesu ninenem ku iariaia,  
 Kaiweria ta aburirek hot,  
 Logugui, waiwaisana ni vin  
 Sauga Iesu ninemal.

Tunahot Iesu abwe ninema.  
 Iesu abwe ninemal;  
 Wasa waiwaisana ta wawasa,  
 Iesu abwe ninemal.

Iesu ni nem tomati ni rut,  
 Tuturaau abwe ta kikitel al,  
 E ni ahera ta ha erana,  
 Sauga Iesu ni nemal.

Iesu ni nem raumal kaiwena,  
 Havian abwe ni moasi hot,  
 Loneganega ge retan ni so,  
 Sauga Iesu ni nemal.

Iesu ni nem wana bateli,  
 Henarau eba abwe ni ahel,  
 Totoria hi henapo bubun,  
 Sauga Iesu ni nemal.

—J.R.W.

## TA GINOL.

Iehova awana toabinau kira,  
 Iesu wana kamasa ta henapoan,  
 Gasisi ge siba I pem eriarā,  
 Tuarari ni pamasal ta taraman.

Ta ginol, ta ginol, ta ginol,  
 Ta taparoro ta tuarari Iesu wana tuarari

E gamgal to garebu ta paanil,  
 E moru ana wewel ta wage eral,  
 Ta ba Iesu I iaomal komiu kaiwemiu,  
 Ebo ku aburirek ni pamarimiu.

Wara tuarari tomaha ta ginol,  
 E gogou ge kakauī abwe nihi so;  
 Iehova arana abwe ta ratahin,  
 E ta muroro Iesu wara to pamal.

Aroau ta gasisi bahi pweata,  
 Wara hanahana Iesu abwe ni pem,  
 Sauga hevan ta ahe wara panua,  
 Arorau tuburau Iesu ta muroro.

—J.R.W.

## IEHOVA I NUNUANA.

Kunem ta gewi ta muroro,  
 Iehova I nunuana;  
 Raburabum ge hi muroro,  
 Iehova i nunuana;

Toloneganega ku rut  
 Ku muroro atemuia,  
 E ta wona Iesu kaiwena  
 Jehova I nunuana.

Ta wasa panaeauia,  
 Jehova i nunuana;  
 Keriso ta aburirekan,  
 Jehova i nunuana;  
 Abwe wara nak I rake  
 E atera ni paiane,  
 Abwe ta iariaia ta ba  
 Jehova I nunuana.

Wara sauga waiwaisana ia,  
 Jehova i nunuana;  
 Iesu wana bateli ta hago,  
 Jehova i nunuana;  
 Ran ia wara sabweru  
 Burin ni mina eriana,  
 Wara kamasa ni mipainan  
 Jehova I nunuana.

Wara sauga abwe ni so,  
 Jehova i nunuana;  
 Iaomal nige ni bweira,  
 Jehova i nunuana;  
 Iesu ni mina erara,  
 E rowarkan arakara.  
 E iaiaaruara ni ahe,  
 Jehova I nunuana.

Raburabuma abwe ta vin,  
 Jehova i nunuana;  
 Nigeia ta neganega al,  
 Jehova i nunuana;  
 Sauga nige ni moasi,  
 Arorau aneloseau,  
 Wona ia nige ta esaian,  
 Jehova I nunuana.



## TABIGA.

---

E wara panua i iohē,  
 Ta aburirek e ta pawa,  
 Tamara i mihikagira.  
 Wara limi lou i tal haba.

Tabiga, arorau,  
 Ta nogogo panua iaka.

Awan iaka ana datua,  
 Ta nawanawa e ta wana,  
 E nige ta e iowalu al,  
 E ta veaho waiwaisana.

Tamara to araaron erana,  
 Abwe ta muroro eriana,  
 Kaiwena Iesu i guiauan,  
 Ge wara sauga ana waisi.

—J.R.W.

## I LOIA AGIRA.

---

Iesu wara topamal i masal,  
 Puna wara nak i vin panua;  
 O nige muroro ana bwaia,  
 I loia agira.

Iesu i iaomal kira kaiwera,  
 E wara vaga i rake haba;  
 O nige muroro ana bwaia,  
 I iaomal kaiwera.

Iesu wara topamal iora,  
 Sauga ta lou ge ta nega nega ;  
 O nige muroro ana bwaia,  
 I ioga agira.

Iesu Keriso abwe ni nem al,  
 Puna bateri ta iariaia ;  
 O nige muroro ana bwaia,  
 I nenem kaiwera.

—J.R.W.

## 36.

## NU NUHIKAGAU.

Bahi nu eguruagau,  
 Iesu nu hago,  
 Sauga getogal no ioga,  
 Nu ioga agau.

Iesu, Iesu, no loi u hago,  
 Boro ona u ioioga,  
 Nu nuhikagau.

Wam korose gaburava,  
 Ea matamatan,  
 U kite ea nuaren hot,  
 No mai u rake.

Iesu wam waisi kaiwena,  
 Ea loa eram,  
 Wam ginol puna ateu,  
 Ni vavaruna.

Iesu iariaia puna,  
 Iaka ea iahe,  
 Nige na eguruanal,  
 Abwe na kite.

—J.R.W.

Sauga Iesu i pem  
 Ta tuarari,  
 E ni pamoasi  
 Ta nok eriana,  
 Wasawasa gamana  
 Ta wowona ;  
 Iesu ta gaiawan  
 Ta muroroan.

—J.R.W.

— — —

39.

# WAWAIAU HI TOBAL.

—

Wawaiau Ierusalem,  
 Wowona Iesu eriana,  
 Wawaiau ran gegewena,  
 Iesu hi tobal eriana.

Ku hago, wawaiau hi wona, ku hago, wawaiau hi  
 wona,  
 Hi tobal nabi, hi tobal nabi, hi tobal nabi Iesu eriana.

Wawasili Iesu nunuana,  
 Wawasili Iesu na awanun,  
 Wawasili teti hevan,  
 Tobal Iehova eriana.

Gamagal ku gewigewi wona,  
 Wona ge tobal Iesu eriana,  
 Tobal Iesu eriana,  
 Wami wona hevani i nok.

—S. Williams.



## KERAUBA IESU ERANA.

---

Nuau na mina Iesu eram.  
Kerauba eram;  
Binimara na nok koros.  
Na nok natia,  
Inoke na wowona,  
Kerauba Iesu eram,  
Kerauba Iesu eram,  
Kerauba eram.

Inoke na kite,  
Teti inoke hevan;  
Bugul u pem erau,  
Nuau na kite,  
Anelose hi ioga agau,  
Kerauba Iesu eram,  
Kerauba Iesu eram,  
Kerauba eram.

Ebo na ora bosum,  
Na nok natia;  
Waikena ge putum hi egon.  
Na iou natia,  
Inoke na wowona,  
Kerauba Iesu eram,  
Kerauba Iesu eram,  
Kerauba eram.

—L. Williams.

## 41.

## EBO NA NOK IESU.

---

Ebo na nok Iesu,  
 No nak i rake,  
 Sauga gegewena,  
 I nuana nau.

Ebo na nok Iesu,  
 No nak i rake,  
 Sauga gegewena,  
 I ioga agau.

Ebo na nok Iesu,  
 Nimaui i libikan,  
 Tunahot i nulau,  
 Panua hevan.

Ioho raburabuma,  
 Neganega i moasi,  
 Kama ianaiana,  
 I pem eriau.

—F. J. Barnes.

## 42.

## WONA ANELOSEAU.

---

Aneloseau hi wona,  
 Kaiwena Iesu i ab,  
 Iehova i muroro kira,  
 Wara nak i rake;  
 Komiau gamagal panaeau  
 Ta tobal Iehova erana,  
 Wasa ta vevegarian,  
 Iesu i ab Bedeliim.

Atema owa Iehova,  
 Kaiwena Iesu i vin,  
 Mananal ge iawarina,  
 Iaka i pem eriamā,  
 Wasawasa i taraman,  
 Abwe i lau panaeauī,  
 Wama neganega kaiwena  
 Nuana i rake.

Iesu Keriso wama Babara,  
 U mina atema gamana,  
 Wama pagan u pasapu,  
 Satani u warioho,  
 Annam waiwaisana u pem,  
 Wama topamal owa;  
 Ha tobal nabi eriam,  
 Kaiwena u ab Bedeliim.

—F.J.B.

---

43.

IESU WARĀ TONUL.

Gamagal panaeauī hi wona;  
 Heria paio heria natio;  
 Iesu erana hi tobal nabian,  
 Iesu wara tonul wara topamal.

Ebo ha gegi kamasa nu pankiteama;  
 Nu nulima owa togasisi hot;  
 Iesu togegi wari heliam,  
 Iesu wama tonul wama topamal.

Ebo ha tuarari eba ha galavenu,  
 Ebo Sabate ha tobal eriam,  
 Iesu torabe nu rabima,  
 Iesu wama tonul wama topamal.

—F.J.B.



## BORAU PUTUM HI TORIL.

---

Borau hohowena,  
Putum hi toril,  
Abwe mananal hi kit  
Inoke hi iariaia;  
Ama Iesu Keriso  
Sauga ia nu nulima,

Borau hi nanawa  
Iesu wana aba ab,  
Nuaria hi kululu  
Wari topamal erana:  
Ama Iesu Keriso  
Ha kululu eriam.

Wari muroro hi teli,  
Gogomau waiwaisana,  
Kaiwena Iesu i ab  
Wari neganega kaiwena;  
Iesu wama Babara  
Ha muroro eriam.

Iesu Keriso ranebe,  
E ran gegewena,  
U matahikagima,  
Abwe ta nogogo hevan,  
E ha tobal nabian  
Owa wama Babara.

—F.J.B.

45.

## NO TOPAMAL.

Iesu no topamal  
     Nu hago agau,  
 No vaga varira  
     U rake haba,  
 Ea aburirek eram,  
 Bahi nu raheau,  
 Owa no topamal,  
     Nu hago agau.  
 Iesu no topamal,  
     Nu ba muroro,  
 Amnam waiwaisana,  
     Nu pem eriau,  
 Nigeia ea rowakun,  
 Wam muroro kaiwena,  
 Owa no topamal,  
     Nu ba muroro.  
 Iesu no topamal,  
     Nu muroro agau,  
 Wam kamasa i waisi,  
     Nu pankiteau,  
 Mananal nu pem erau,  
 Abwe na nawa bubun,  
 Owa no topamal,  
     Nu muroro agau.

—F.J.B.

46.

## IAIRUAU U HAGO.

Iaiaruau u hago.  
 Iesu ni ba eriam,  
 Iaka i neli eram:  
 Tab u muroro agau?

Nu papatena agau.  
 E tanau nu pweala,  
 Anam na hago bubun,  
 Sauga gegewena.

Iaiarua Bwabwarena,  
 Iora hot Iehova,  
 Logugui nu baunan,  
 Ha henapoan.

—F.J.B.

49.

# KU LEWA PANUA.

Komiu tokuki panua i ran,  
 Tabiga ku tan garowa waiwaisana,  
 Bagol ge mana iaka hi bakuhu,  
 Ku mal esobu gamana ku lewa panua.

Ku lewa panua, ku lewa,  
 Bwagana wowol ku lewa panua  
 Tunahot ku mal esobu gamana,  
 Waga iaka i robek ku lewa panua.

Esobu i mal ebo ku aburirek,  
 Bwagana arul i gasisi hot,  
 Ku lewa nabian abwe ku tan,  
 Kubwana ku gaiawan e ku lewa panua.

Ku kite sabweru abwe i ha,  
 Iaruiaru ge gogou iaka hi so,  
 Ku mal esobu gamana ku wona,  
 Ku iariaia nabian ku lewa panua.

—F.J.B.



ANELOSEAU HI GAVAI.

---

Aneloseau hi gavai,  
 Wasamiu hi karivai,  
 Hi iou raburabuma,  
 Toloneganega ku rut,  
 Iesu i ioga agimiu,  
 Aneloseau hi iariaia,  
 Iesu i pamalila.

—F.J.B.

---

IESU BABARA I NEM KAIWERA.

---

Wona wona Iesu Babara,  
 Inenem kira kaiwera,  
 E ta muroro eriana,  
 E ta wona waiwaisana.  
 E ran i waisi nabinabi,  
 Ran Iesu ni nenem,  
 Wara odam ta pataon ona,  
 E ta muroroan.

Ta iariaia kaiwena,  
 Iesu abwe ni sikal,  
 Arona aneloseau,  
 Ta nogogo hevan.

Ta matamatan eriana,  
 Nigeia ta esaian,  
 Ana siga Iesu ninem,  
 Hanahana ni pem.

—F.J.B.

## 52.

## TOBAL ERIANA.

Nuau na wana sauga ia  
 E sauga gegewena,  
 Kaiwena Iesu heliam  
 Na nowa eriana.

Na tobal, tobal,  
 Tobal sauga ia,  
 Tobal tobal,  
 E sauga gegewena.

Ebo Satan rawakikau,  
 Iesu na ioga an,  
 E ebo nak na pawa,  
 Na tobal eriana.

Iesu wasana waiwaisana,  
 I waisi nu wasan,  
 E gamagal gegewel,  
 Ni hi tobalan.

—F.J.B.

## TA IOGA AGIL.

Gamagal ta ioga agil,  
 Babara wana hagari,  
 E wana limi ta pakalapop  
 Iehova nuana kira.

Ta tuarari, ta tuarari,  
 Gamagal kaiweria,  
 Ta nok, ta nok ta ioga agil,  
 Togegi ta nulil.

Gamagal ta ioga agil,  
 Atera iaka hi kahin,  
 Kaiwena gamagal enuna,  
 Anara nigeia hi hago.

Gamagal ta ioga agil,  
 Wana limi i bwaia,  
 Gamagal ta ioga agil,  
 Iehova wasana ta wasan.

—F.J.B.



**MOORE COLLEGE  
 LIBRARY**



