

SKY PILOT NEWS

DEC. - JAN., 1958

Published monthly by the Sky Pilot Fellowship Ltd., Marella Mission Farm, Acres Road, Kellyville, N.S.W. Phone YA 2427.

Patron: Rt. Rev. Bishop W. G. Hilliard, M.A.

Director: K. Langford-Smith, F.R.G.S.

Secretary: Norma K. Warwick.

Postal address: P.O. Box 29, Castle Hill, N.S.W.

SUBSCRIPTION, 2/6 per annum.

Registered at G.P.O., Sydney, for transmission by post as a periodical.



WHO STOLE THE CHRISTMAS TURKEYS?

THE CHRISTMAS TURKEYS: They had been fattening for weeks in preparation for the most important event of the year. Each day the eager children (most of whom had never tasted turkey) examined them to see if they were actually putting on weight. Small dark faces glowed with anticipation in daylight and smiled as if dreaming of the Christmas dinner at night. Then a few days before Christmas the horrified dark children discovered that the turkey pens were empty. The turkeys had disappeared overnight; with them the dreams of a turkey dinner! We suppose that turkey thieves would not worry about a few broken-hearted aboriginal children . . .

A friendly photographer from the "Sydney Morning Herald" displayed a picture of the disappointed dark children by the empty turkey

pen and things began to happen. From all over N.S.W. (even from Tasmania) came letters of sympathy, mostly containing donations to help replace the loss. Friends on all hands sent gifts of poultry, fruit, groceries and other Christmas fare. The response was instant and spontaneous. There was no turkey for Christmas this year, but the dark children fared so well that one little boy said wistfully: "I hope the turkey thieves come back again next year! We had a wonderful dinner." We sincerely hope it does not happen again, but we lift up our hearts in praise to the God who can turn evil into good: and we thank the many friends who were His instruments.

THE SAW BENCH: When the Soroptimist Club of Parramatta gave us a slow combustion stove for the kitchen, together with a hot water



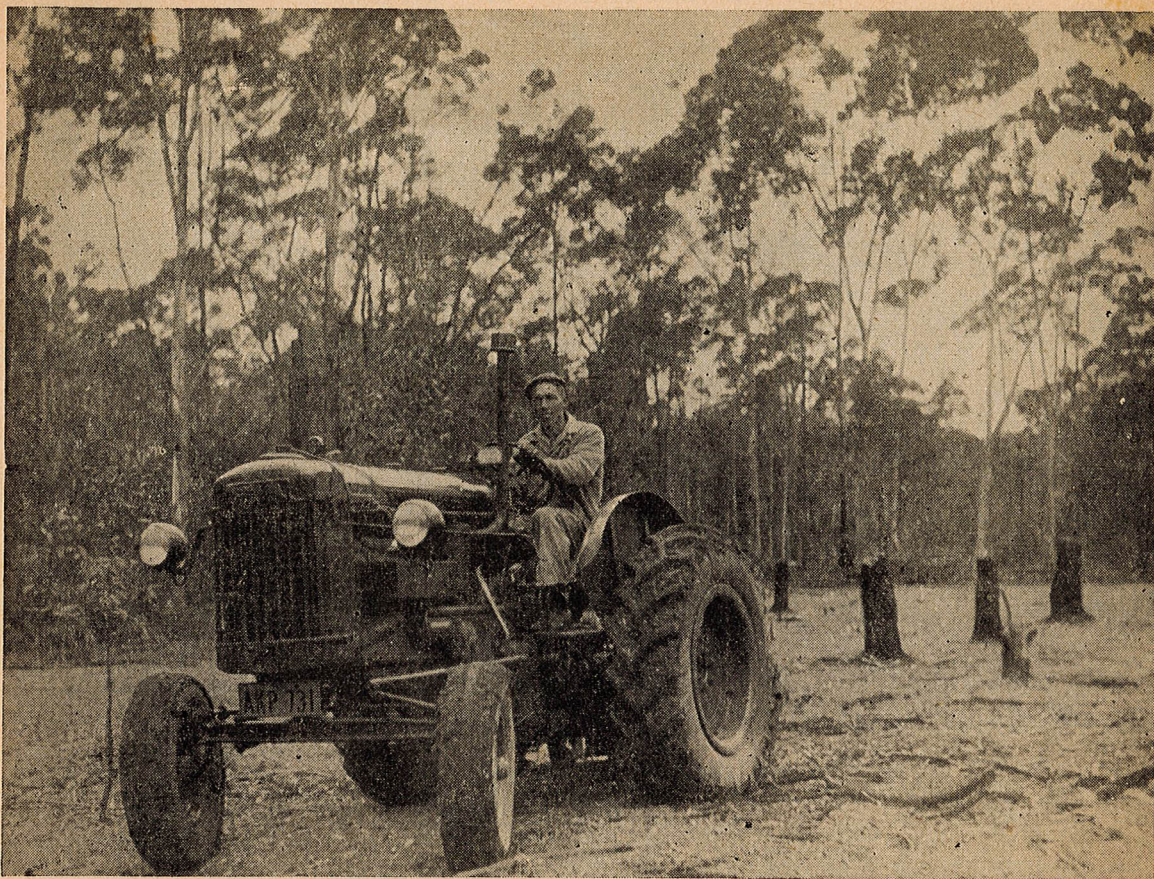
The saw-bench works again

system, it cut down our electricity expenses considerably. But with so many children to feed and so little finance to cater for it we grudgingly having to spend so much on coke. The cost of the coke would almost feed another needy dark child. There was plenty of wood in our bush paddock going to waste; but what could we do about it? The T model Ford engine that we had once used to drive the saw had finally fallen to pieces. As it had spent about 20 years driving a car and another 15 or so driving the saw we could hardly blame it. We remembered that the Mission Fordson Major tractor had a power take-off, but the saws were old and rusty and badly needed gulleting. Just how badly they needed attention can be gathered from the fact that over 2000 hardwood palings, besides studs, rafters and joists had been cut on them, to say nothing of the firewood used since the Mission Farm commenced. The Sky Pilot was no longer able to do heavy work and there were no other men on the staff so it seemed that we should have to continue burning coke.

Then Mr. Barr came along with a party of friends: Messrs. Herb. Ware, George Lumb,

Dennis Heidman, Ray Mitchell and Ken Crossman. A truck was kindly loaned by Messrs. Aylward & Kennedy and the team set to work. Logs were carted to the bench, the saws were sharpened and gulletted, the tractor overhauled and in next to no time some tons of firewood was ready for use. Not content with this, the team set up and repaired an old shearing machine. Messrs. Dangar Gedye and Malloch Ltd. repaired our hand-piece free of charge and presented us with combs and cutters and so the sheep were shorn!

Quite recently we received a visit from the Church of England Men's Society (with friends) from Pennant Hills. They brought out brushes and equipment and 4 gallons of roofing paint. The paint was donated by Brolite Pty. Ltd. In the one day these friends painted most of the iron roofs on the Mission Farm. Not only will this help to preserve the old iron but it has given the Farm a "new-look." It has also given us new heart to carry on with the work. Practical Christianity such as this means so much to tired workers who seem to be battling against so many difficulties.



"The Mission tractor has a power take-off."

SKY PILOT YOUTH FELLOWSHIP: Many of our younger friends have pressed us for some time to commence a Youth Fellowship in conjunction with our work at Marella Mission Farm. There are so many ways in which such a youth group can assist in this work as well as having Christian fellowship and a great deal of healthy fun. A first committee has now been formed to arrange for future activities and to prepare the necessary buildings and facilities required. A large barbecue kitchen is being constructed where the cooking can be done and meals served. A cabin for girls and another for boys is next on the list. Willing young workers spend many a Saturday helping to construct these, and it is hoped to have the Youth Fellowship in full swing before Christmas.

The Youth Fellowship will help on the farm at week ends. They will teach the dark children to ride the two ponies we have. They will also teach the dark children to swim in the newly completed dam which, when full, will cover over 10,000 square yards. It is hoped to arrange camps and car drives, hikes and games. In the evenings there will be opportunities for

showing films and slides. Special speakers will be arranged and there will be time for Bible study and prayer.

Later on it is hoped that various Christian Fellowships from different Churches will be able to come here for an occasional week-end, to see something of work amongst the dark children and to share in Christian fellowship with our own Youth Fellowship. We would be very glad to hear from young people between the ages of 16 and 30 who would like to have further particulars. The Sky Pilot will direct operations and there will be house-parents for the various camps; but as far as possible the Youth Fellowship will organise their own programmes. If you have an occasional free week-end; if you are young and keen; if you like outdoor life; if you are interested to help bring joy into the lives of little dark children—here is your opportunity. Address your inquiries to the Sky Pilot Youth Fellowship, P.O. Box 29, Castle Hill (Phone YA2427). President, Ivan Hinton; Secretary, Arthur Langford-Smith; Treasurer, Ken Langford-Smith; Musical Directors, Susan Wynn Jones and Norman Farrell; Art Director, Margaret Langford-Smith.



Gum-leaf band at La Perouse.

LEGACIES DO HELP

The following wording is suggested for use in wills in which it is intended to benefit Marella Mission Farm:

FORM OF BEQUEST

I give, devise and bequeath to Marella Mission Farm (conducted by the Sky Pilot Fellowship Ltd.), Acres Road Kellyville, in the State of New South Wales, the sum of pounds and/or the following property free of all duties, for the acknowledged purposes of the said Mission, and I declare that the receipt of the Treasurer for the time being thereof shall be a sufficient discharge to my executors or trustees for the said legacy and/or devise.

SKY PILOT FELLOWSHIP
MARELLA MISSION FARM
10th Anniversary of the SKY PILOT'S LOG
RALLY and SALE of WORK
 to be held (D.V.) in the
SYDNEY TOWN HALL (Lower Hall)
SATURDAY, 1st NOVEMBER, 1958

DOORS OPEN 10.30 .a.m

PUBLIC MEETING, 2 p.m.

OUR GUEST ARTIST: A CHRISTIAN ABORIGINAL TO PLAY THE GUM LEAF.

SPECIAL SOLOISTS: ALSO ITEMS FROM THE DARK CHILDREN FROM MARELLA.

Refreshments available all day. Bring your friends and help support this work for the dark children. Gifts for stalls are urgently required. They should be railed to the "Sky Pilot," Parramatta Railway Station, or brought to the Town Hall on the day of the Rally. For further particulars, please phone Marella Mission Farm, YA 2427.