

SKY PILOT NEWS

APRIL - MAY, 1958

Published monthly by the Sky Pilot Fellowship Ltd., Marella Mission Farm, Acres Road, Kellyville, N.S.W. Phone YA 2427.

Patron: Rt. Rev. Bishop W. G. Hilliard, M.A.

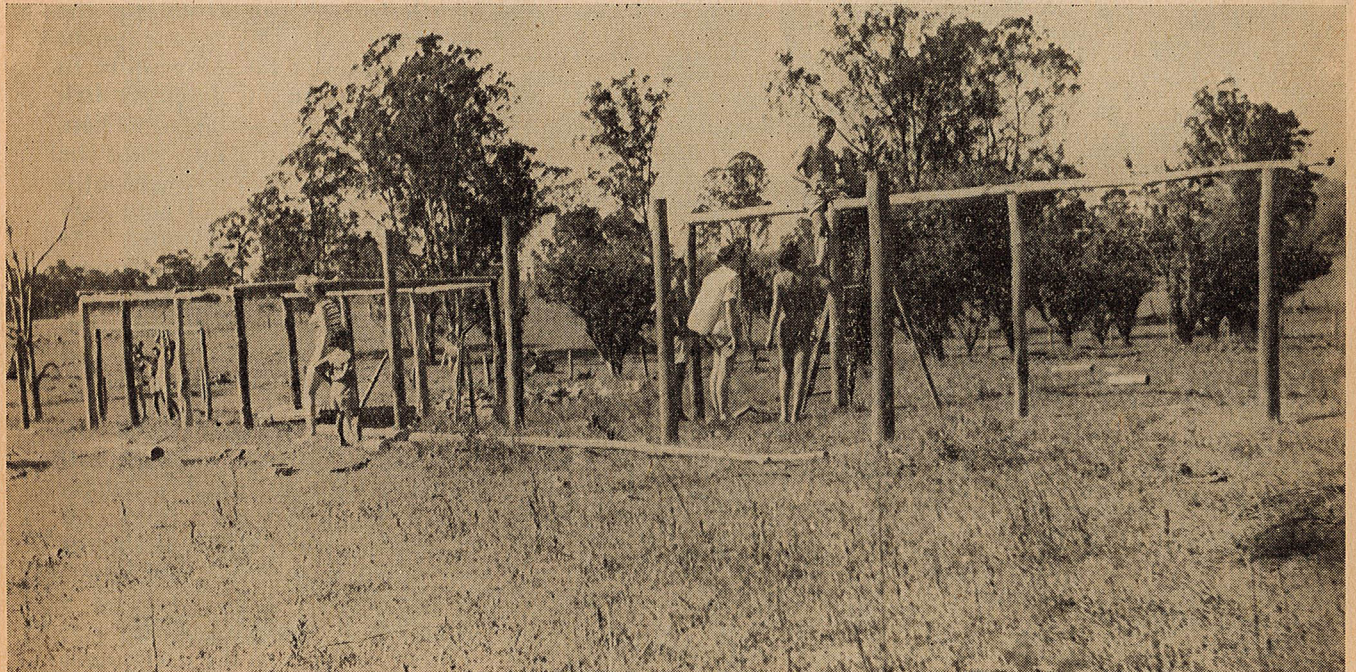
Director: K. Langford-Smith, F.R.G.S.

Secretary: Norma K. Warwick.

Postal address: P.O. Box 29, Castle Hill, N.S.W.

SUBSCRIPTION, 2/6 per annum.

Registered at G.P.O., Sydney, for transmission by post as a periodical.



The Sky Pilot Youth Fellowship erecting dressing sheds and barbecue kitchen at the Mission Farm.

SKY PILOT YOUTH FELLOWSHIP

As mentioned in our December-January "News," the members of this newly-formed group have been very busy with the buildings required for their activities. The framework of the barbecue kitchen, and a cabin for girls, and another for boys have already been erected. Each of these cabins is 30 x 12 feet. In Winter time it will be possible to use a log fire for the barbecues; in Summer, owing to bush-fire regulations, the cooking will be done on the stoves in the kitchen. We will be glad to hear of young people between the ages of 16 and 30 who are interested in this work. The young folk will not only have a time of happy Christian fellowship as they arrange camps, hikes, car drives and games, but they will also be able to teach the dark children to swim and ride the Mission ponies. On Sundays they will conduct Sunday School for the dark children.

When the buildings have been completed it is hoped to be able to invite other Fellowships from the various Churches to come out here for

an occasional week-end camp so that they will see something of the work we are trying to do amongst the aboriginal children of our own land.

PIANO: At our last Rally and Sale of Work we announced that a piano was badly needed for this work. Firstly, so that the children could be taught choruses, and secondly, for hymns and songs at the many gatherings held at the Mission Farm. We are very happy to state that before the meeting was over a very fine piano was offered by an anonymous Christian friend who was present. This piano is now in the Mission lounge, and already it has been a source of great pleasure to children and adults. We are deeply grateful to God and to these servants of His who have made this possible.

CHILDREN'S HOLIDAYS: With the special authority of the Aborigines' Welfare Board, we have arranged for all the dark children to



"Have you room for me?"

have at least two weeks' holiday in January. Will you please make a special note of the dates? *The Mission Farm will be closed from the 10th to the 24th of January, 1959.* We specially ask friends to remember this and make it as widely known as possible so that visitors will not call between those dates. There will only be a caretaker staff here, and we do not want friends to be disappointed if they call when the children and most of the staff are absent.

THE DROUGHT: The long-continued spell of dry weather, and the water restrictions,

have again upset our growing crops. Rain is badly needed to save the little that we have been struggling to keep alive in the orchard and garden. However, we now have had the pumping plant and motor delivered, together with all the piping and spray lines. Work will go on setting up the machinery and laying the pipes; but we need a lot more water in the dam before any extensive irrigation can be undertaken. There has been very little rain since the dam was completed a few months ago. When full, it will hold over 2½ million gallons of water. At present there is only a small pool 10 or 12 feet in depth in the bottom. This is handy as a swimming pool, but would not last long once irrigation commences.

THE LATE ARCHBISHOP OF SYDNEY: The sudden home call of Dr. H. W. K. Mowll left thousands of Christians from all Churches to mourn the passing of one of the outstanding evangelical leaders of our time. He set a standard of Christian living and leadership that won the respect and admiration of all. To those of us at the Mission Farm, however, there was a feeling of personal loss. In 1934 the Sky Pilot spent several days at Bishops court in conference with the Archbishop. From that time onwards His Grace took a keen interest in the activities of the Sky Pilot Fellowship. Many of our friends will remember how Dr. Mowll graciously spared time to come out to the Mission Farm with Bishop Stanway, where he

took the chair at our Rally and Sale of Work, some five or six years ago. On very important occasions at the Mission Farm a little case of silver spoons comes into use; it was a wedding present from the Archbishop to Keith and Gwen Langford-Smith when they were married nearly 23 years ago. On several occasions Mr. Langford-Smith had the privilege of driving the Archbishop and Mrs. Mowll to and from "Gilbulla". When Mr. Langford-Smith was in hospital following a coronary occlusion, the Archbishop made time to phone the hospital from time to time to ask for news. And when the "Herald" published the story of the theft



Persian cats at Marella Mission Farm.

of the Mission turkeys, though it was only a day or two after the loss of his wife, the Archbishop sent a message of sympathy. Surely we have never had so great a leader in the Church who could remember even the most unimportant of his people. We thank God for every remembrance of him.

10th ANNIVERSARY OF THE SKY PILOT'S LOG: The Anniversary Rally and Sale of Work held in the lower Sydney Town Hall on November 1st, 1958, was one of the most successful that we have ever had. Many more friends than usual attended, and there was a most friendly spirit that was evident to all. The financial results also were better than usual. Including donations, we took a total of over £380 on the day. We wish to thank all who helped to make this such an outstanding success.

DAY FOR "SHUT-INS": This year it was not possible to hold the usual day for shut-ins. However, we trust to be able to hold such a day about March, 1959. We would be glad to hear of friends who, through age or ill-

health, are unable to travel by train and bus but who would like to visit the Mission Farm. We can arrange for cars to pick up our guests in the morning. They will be brought to Marella for lunch, and will be returned to their homes before it is too late in the afternoon. In previous years, these days have been a time of great pleasure and blessing. The invitation is to ALL who are shut-in, no matter what Church they may belong to. Just send your name and address to the Secretary, Sky Pilot Fellowship, Box 29, Castle Hill, and we will see that an invitation is forwarded. We would also like to hear from car owners who would be willing to give up one Saturday in March in order to bring this day of pleasure to those who have so little brightness in their lives.

THE LATE MR. GEORGE WALTERS: In the October-November "News" we mentioned the building of the Mission dam, which will be an asset in the future. The operator was Mr. George Walters, who stayed with us at the Mission Farm, and in no time became

"one of the family". Never before had we a guest who was more thoughtful and considerate, and we learned to love and respect him for his fine character. After finishing the dam here, Mr. Walters took his bulldozer to the Snowy River to another job that was waiting. It came as a terrible shock to learn shortly after that George had been killed in an accident with his machine. He leaves a young wife and son. We pray that they may be comforted in their sorrow. We at the Mission Farm can hardly believe that George has passed on. In his "spare" time George was a sergeant in the army, and his hobby was to jump from aeroplanes with his parachute. We often thought of the risks he took in such exercises; little did we dream that the fatal accident would occur in the way it did. We wish to extend our deepest sympathy to his wife and son. Every time we look at the dam at our back door it will remind us of the man who built it.

THE DARK CHILDREN: Sometimes we admit children for a period of weeks or months in order to assist mothers who, temporarily, are unable to take care of them. For this reason there are children coming and going from time to time. But we are unable to accept any more permanent inmates. Our numbers — from 18 to 20 children — cannot at present be exceeded. However great the need, there is just not the accommodation or the staff to care for them properly. This has been a matter of great concern to the Council of the Fellowship. It should not happen that ANY needy dark child should be turned away. For this reason, the Council has been very busy drawing up plans for larger and permanent accommodation. When matters have been finalised, a copy of the plans will be published in this paper; in the meantime, a lot of work is involved. Plans have to be drawn. These are considered carefully by the various members of the Mission Council, and suggestions for improvements are invited and where considered advisable are incorporated. The plan is then re-drawn and submitted to an honorary architect for his advice. Builders have to be interviewed and quotes obtained for constructional costs. Finally the completed plans have to be submitted to the Shire Council for its approval. All this takes time. But our Council members are not allow-

ing any unnecessary delay. Different members are spending hours of their time every week in seeking to perfect their particular share of the work. You may also share in this work, firstly by your prayers that God will direct and over-rule every stage of the work; secondly by seeking to interest your friends in this work for the dark children.

Of recent months many new friends have taken a keen interest in the work. In his deputation work, the Sky Pilot has spoken to many thousands of people during the past 12 months. A steadily increasing flow of visitors is reaching the Mission Farm to see just what we are doing. Those who attended one of the Rallies at the Mission Farm a few years ago have remarked on the changes. In place of dust, broken down fences and dilapidated buildings, there is the new 2½ million gallon dam, young fruit trees, and (in spite of the dry spell) an ever-increasing garden. Young shade and ornamental trees and flowerings shrubs are being planted wherever possible. We are very grateful to friends who have supplied us with young shrubs, trees, and plants. This year nearly 1,000 Hippeastrums flowered, and there are over 2,000 Flag Irises. The several hundred Amaryllis or Belladonna Lilies should be flowering after Christmas, and will make a great show.

For some time we have been averaging between 70 and 80 visitors a week — sometimes as many as 170. We are very pleased about this, though unfortunately we cannot spare as much time as we would wish with our visitors.

ROWING BOAT: We are anxious to purchase a small rowing boat, in good condition. It is required for use on the Mission dam. If any friend knows where one can be obtained at a reasonable price we will be glad to hear of it.

CONCLUSION: We have much cause to praise God for the wonderful way He is opening up this work; for the health and happiness of the children; for the daily provision of our needs; for the increased support that we need in order to care for our "family", and for answered prayer in many important matters. Please continue to pray for His blessing, guidance and provision for the present and the future of this work.